

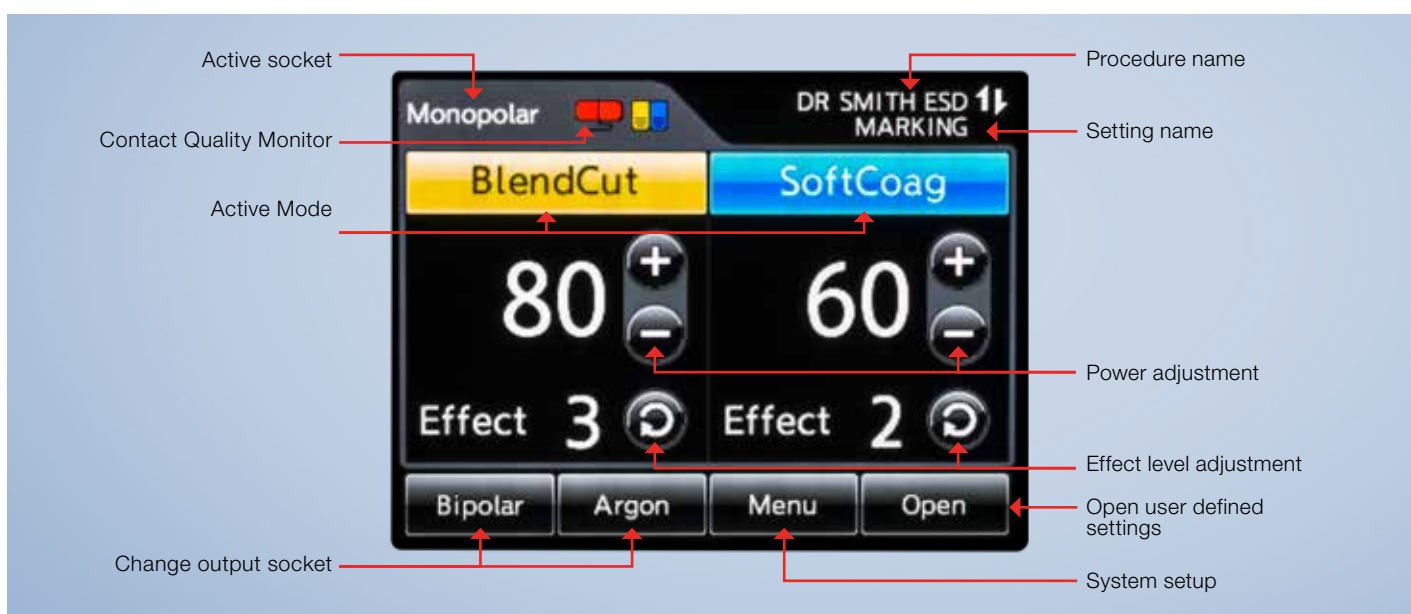
## ESG-300 (Electrosurgical Generator) Quick Reference Guide

**CAUTION:** This guide is only a summary of the instructions for use of the ESG-300 Electrosurgery Generator. Be sure to reference the instruction manual that was included with your product purchase.

### ESG-300 and APU-300 Display Interface



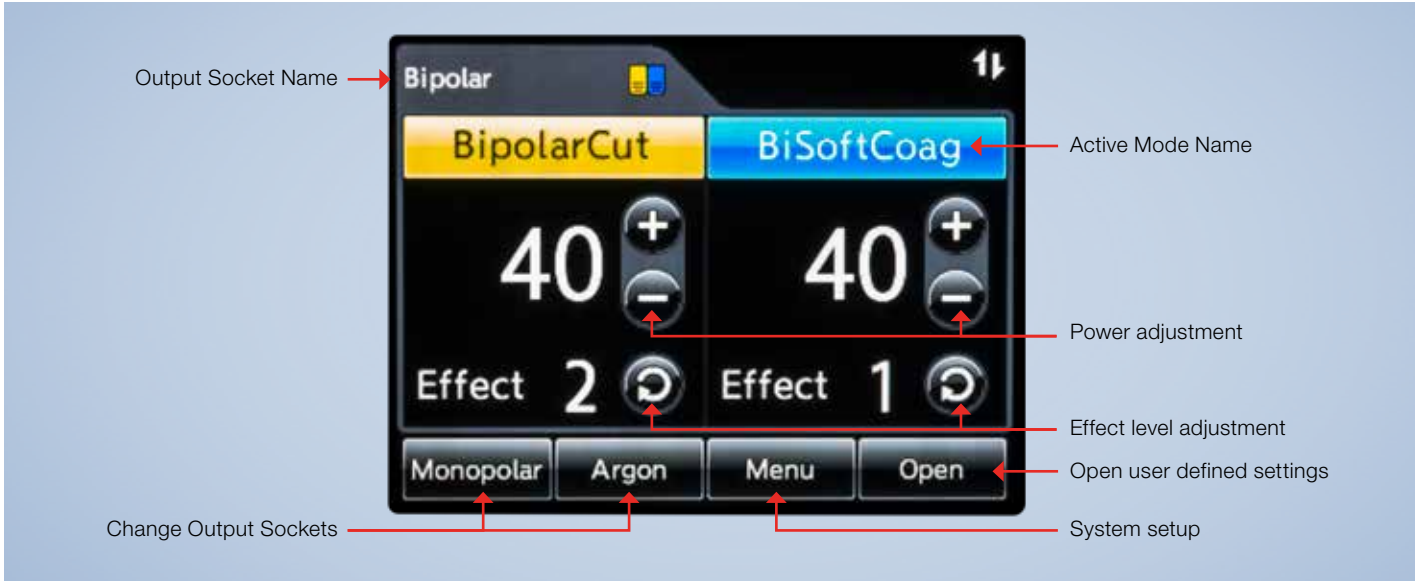
### Monopolar Home Screen



# ESG-300 (Electrosurgical Generator)

## Quick Reference Guide

### Bipolar Home Screen



### Argon Home Screen



# ESG-300 (Electrosurgical Generator)

## Quick Reference Guide

### ESG-300 System Operating Steps

- 1 Turn on the ESG-300 & APU-300.



- 2a Select Mode: Monopolar; Bipolar; Argon

Monopolar



Bipolar



Argon

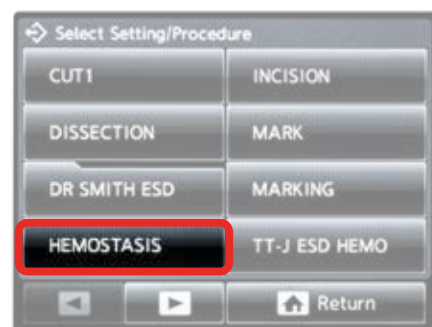


Select mode by tapping on the desired mode located on the bottom of the touch screen

- 2b (Optional) Select User Defined Setting or Procedure.



1.) Select "Open"



2.) Select setting or procedure



3.) Verify setting is correct

# ESG-300 (Electrosurgical Generator)

## Quick Reference Guide

### ESG-300 System Operating Steps

#### 3 Mode Menu



1.) Select the mode by tapping on color bar on the touch screen



2.) In the menu screen, tap to select the desired mode



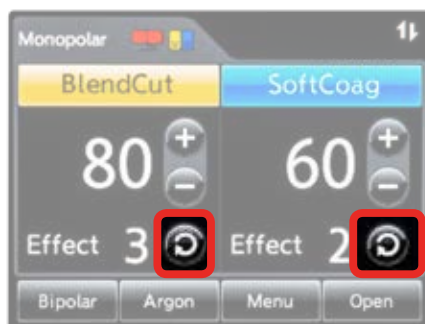
3.) Once selected, the home screen will display the change

#### 4 Changing the Power Level



Select to adjust power level

#### 5 Changing the Effect

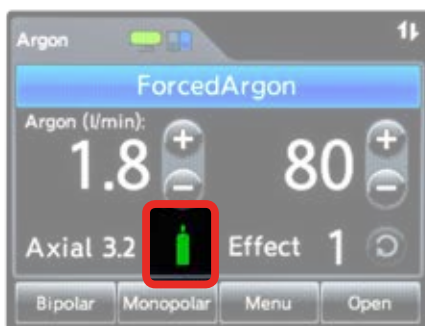


Select to adjust effect

#### 6 Argon Plasma Applications



1.) Open the argon tank

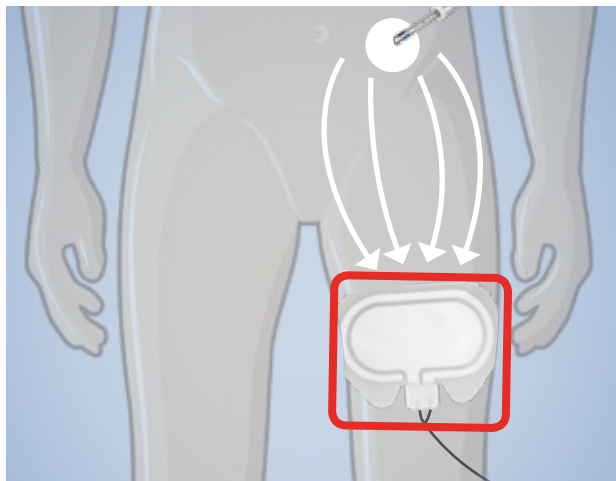


2.) Confirm supply connection indicator displays connection and tank status

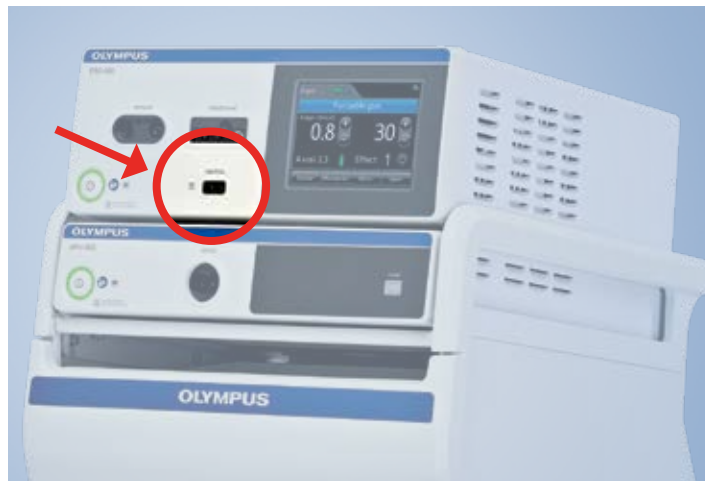
# ESG-300 (Electrosurgical Generator) Quick Reference Guide

## ESG-300 System Operating Steps

7



1.) Apply the neutral electrode to the patient



2.) Connect to the ESG-300

8 Monitor Neutral Electrodes: Contact Quality Monitor



If the red neutral electrode lights up & alarm tone sounds:

- Is the neutral electrode correctly connected to the device?
- Does the neutral electrode have sufficient contact to the skin?



Correct = Green



Error = Red



# ESG-300 (Electrosurgical Generator)

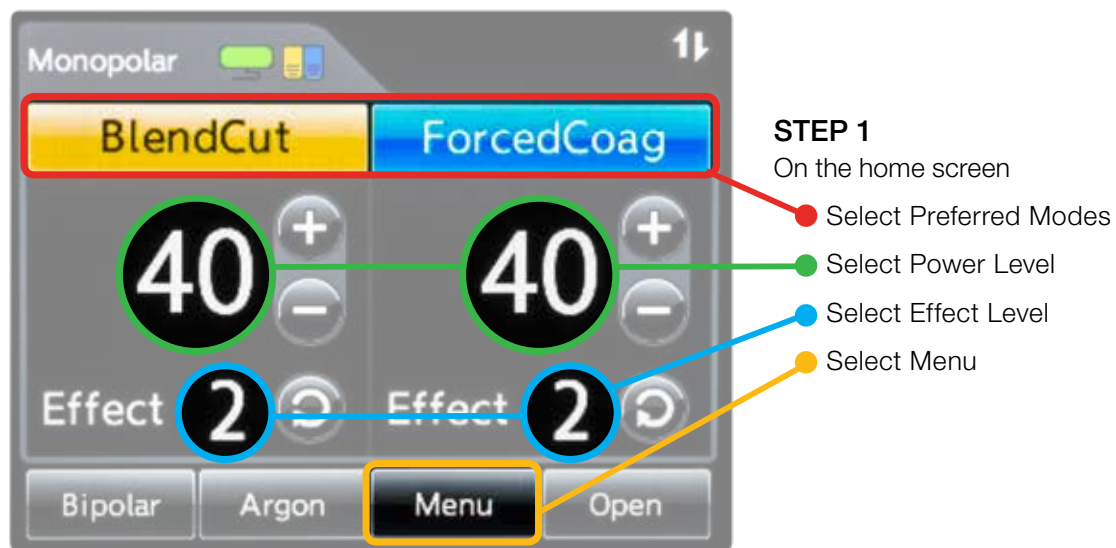
## Quick Reference Guide

### ESG-300 System Operating Steps

9 Connect device in appropriate receptacle



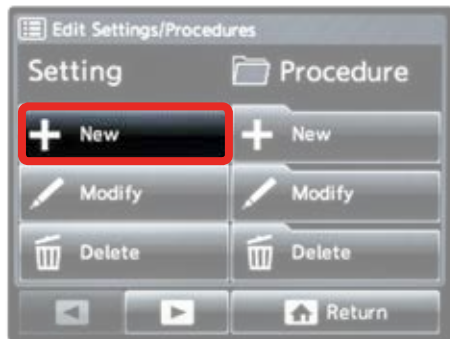
### Creating User Defined Settings



# ESG-300 (Electrosurgical Generator)

## Quick Reference Guide

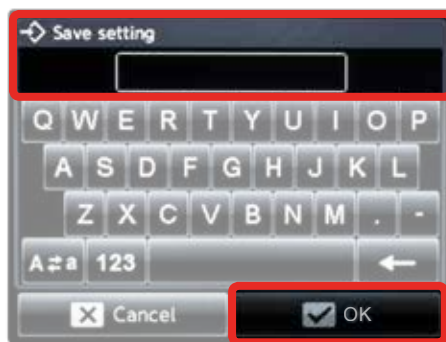
### Creating User Defined Settings



#### STEP 2

Edit Settings/Procedures screen

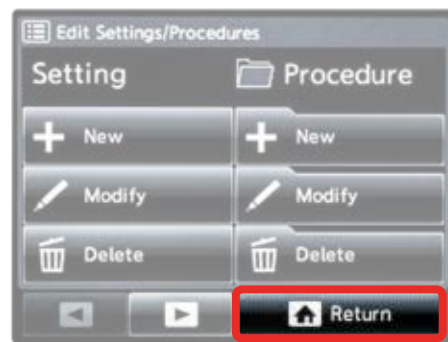
- Select "New" Setting



#### STEP 3

Save Setting Screen

- Enter the setting name
- Select "OK"



#### STEP 4

Edit Settings/Procedures screen

- Select "Return" to return to the Home Screen

### Creating User Defined Procedures

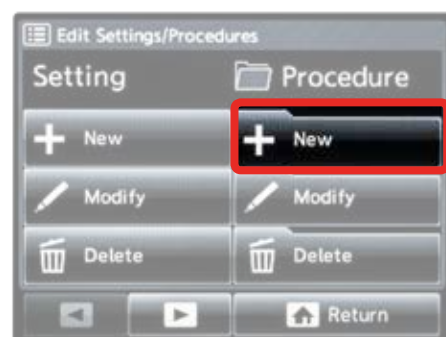
A user-defined procedure is a compilation of user-defined settings.



#### STEP 1

On the Home screen

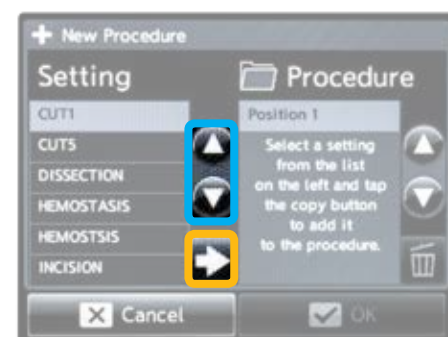
- Select Menu



#### STEP 2

Edit Settings/Procedures screen

- Select "New" Procedure



#### STEP 3

New Procedures screen

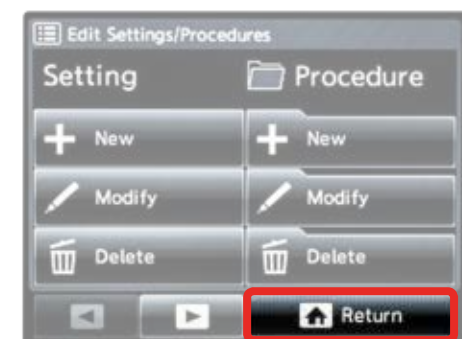
- Use up/down to highlight the setting
- Use arrow to move the setting on the left into the procedure column on the right



#### STEP 5

Save Procedure Screen

- Enter the procedure name
- Select "OK"



#### STEP 6

Edit Settings/Procedures screen

- Select "Return" to return to the Home Screen

# ESG-300 (Electrosurgical Generator)

## Quick Reference Guide

ESG-300 Operation Settings					
Basic Procedures					
	Procedure	Instrument or Technique	Mode	Power	Effect
	<b>Snare Polypectomy: Sessile polyp</b>	Close the snare slowly and gently	PulseCut Slow	120	2
	<b>Snare Polypectomy: Pedunculated polyp</b>	Close the snare slowly and gently	ForcedCoag	20	4
	<b>Endoscopic Mucosal Resection (EMR)</b>	Close the snare slowly and gently	PulseCut Slow	120	2
	<b>Hemostasis</b>	Coagrasper	SoftCoag	50	3
	<b>Sphincterotomy</b>	Sphincterotome	PulseCut Fast	120	2
Endoscopic Submucosal Dissection (ESD)					
	Procedure	Instrument or Technique	Mode	Power	Effect
	<b>Marking</b>	Knife (apply gentle pressure)	ForcedCoag	20	2
			SoftCoag	50	3
	<b>Pre-Cut/Incision</b>	Knife	PulseCut Fast	120	2
			BlendCut	30	2
	<b>Submucosal Dissection</b>	Knife	PowerCoag	30	2
	<b>Hemostasis</b>	Closed Knife	PowerCoag	30	2
Peroral Endoscopic Myotomy (POEM)					
	Procedure	Instrument or Technique	Mode	Power	Effect
	<b>Incision</b>	Knife	PulseCut Fast	120	2
	<b>Dissection/Tunneling</b>	Knife	SprayCoag	40	2
	<b>Myotomy</b>	Knife	PulseCut Fast	120	2
	<b>Hemostasis</b>	Coagrasper	SoftCoag	50	3

The above settings are examples based upon previous general clinical usage of the device. Please note that clinical staff are solely responsible for selection of an appropriate mode and power level, dependent upon the instrument being used and the condition of the tissue being treated. Due to the heterogeneity of instruments and clinical conditions, Olympus cannot accept liability for clinical risks arising from the use of these example settings.



# ESG-300 (Electrosurgical Generator)

## Quick Reference Guide

ESG-300 Operation Settings					
Argon Plasma Coagulation (APC)					
	Procedure	Instrument or Technique	Mode	Power	Effect
	Diffuse bleeding in the right colon/duodenum	Activate MAPC probe within a 2-5 mm distance from tissue	SmartArgon	120	4
	Diffuse bleeding in the remaining colon and rectum	Activate MAPC probe within a 2-5 mm distance from tissue	PulsedArgon Fast	30	N/A
	GAVE/radioproctitis	Activate MAPC probe within a 2-5 mm distance from tissue	PulsedArgon Fast	30	N/A
	Angiodysplasia	Activate MAPC probe within a 2-5 mm distance from tissue	PulsedArgon Fast	30	N/A
	Tumor Reduction	Activate MAPC probe within a 2-5 mm distance from tissue	ForcedArgon	50	N/A
	Barrett's Esophagus	Activate MAPC probe within a 2-5 mm distance from tissue	PulsedArgon Fast	40	N/A
Pulmonary Procedures					
	Procedure	Instrument or Technique	Mode	Power	Effect
	Less extended lesion, bleeding	CD-6C-1	SoftCoag	40	3
	Polypoid Lesion (intraluminal mass)	SD-7C-1	PulseCut Slow	50	2
	Web-like Stenosis	KD-31C-1	PulseCut Fast ForcedCoag	40 40	2 3
	Tissue Ablation	Activate MAPC probe within a 2-5 mm distance from tissue	ForcedArgon	35	N/A

The above settings are examples based upon previous general clinical usage of the device. Please note that clinical staff are solely responsible for selection of an appropriate mode and power level, dependent upon the instrument being used and the condition of the tissue being treated. Due to the heterogeneity of instruments and clinical conditions, Olympus cannot accept liability for clinical risks arising from the use of these example settings.

# ESG-300 (Electrosurgical Generator)

## Quick Reference Guide

### ESG-300 Monopolar Modes



The wired foot switch is an accessory and must only be used in conjunction with the compatible ESG-300 to activate the generator.

The foot switch consists of:

- Yellow cut pedal to activate the selected cutting mode.
- Blue coagulation pedal to activate the selected coagulation mode.
- Toggle button to switch between user-defined settings within the procedure.
- Foot switch plug (7-pin connector) to connect the foot switch with the ESG-300. The length of the connecting cable is 4m.



#### YELLOW PEDAL

Press to activate the selected **CUTTING** mode

#### BLUE PEDAL

Press to activate the selected **COAGULATION** mode

CUT MODES			COAGULATION MODES			
PureCut	PulseCut	BlendCut	PowerCoag	ForcedCoag	SprayCoag	SoftCoag
Continuous cutting	Controlled cutting with an intermittent duty cycle of different duration	Cutting of varying tissue structures with increased hemostasis capacities	Superficial coagulation with increased dissection capability	Superficial pinpoint coagulation	High peak voltage for superficial coagulation without contact between the HF instrument and the tissue	Deeper coagulation
High Power Cut Support (HPCS) – immediate cutting Fast Spark Monitor (FSM) – optimized cutting power			Versatile coagulation technology			

Olympus is a registered trademark of Olympus Corporation, Olympus America Inc., and/or their affiliates. | Medical devices listed may not be available for sale in all countries.