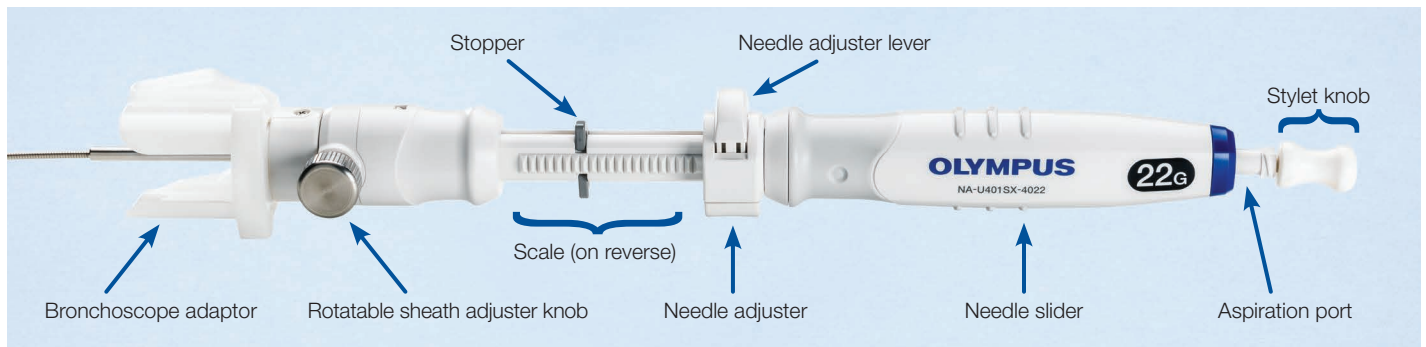


## ViziShot 2 EBUS-TBNA Needle Quick Reference Guide

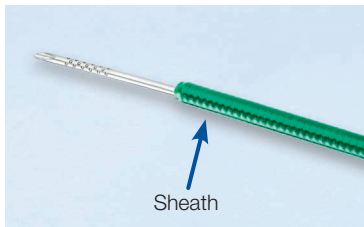
Below are steps for Endobronchial Ultrasound Transbronchial Needle Aspiration (EBUS-TBNA). This minimally invasive procedure enables real-time ultrasound-guided sampling of tissue from the anterior and posterior mediastinum and hilar regions.

**CAUTION:** This guide is only a summary of the ViziShot 2 EBUS-TBNA Needle Instructions for Use. For detailed operating instructions, be sure to follow the ViziShot 2 EBUS-TBNA Needle instruction manual included in the device package.

### Product Overview



ViziShot 2 aspiration needle



Needle



VacLok syringe



Single-use adaptor biopsy valve  
This adaptor should be attached to the instrument channel port of the endoscope before the needle is inserted.

### ViziShot 2 Needle Steps for Use



Remove the red protective plate and make sure that the instrument has not become loosened and is free from other damage.



Ensure that the sheath adjuster slides and rotates smoothly. Then move the sheath adjuster as proximally (or retracted) as possible and tighten the knob.



Confirm that the needle slider is fully extended by pulling up until it clicks.

# ViziShot 2 EBUS-TBNA Needle Quick Reference Guide

**CAUTION:** This guide is only a summary of the ViziShot 2 EBUS-TBNA Needle Instructions for Use. For detailed operating instructions, be sure to follow the ViziShot 2 EBUS-TBNA Needle instruction manual included in the device package.

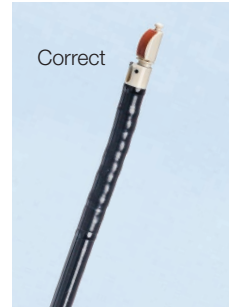
## ViziShot 2 Needle Steps for Use (continued)



Ensure the needle adjuster is locked. Failure to do so may result in damage to the endoscope.



Ensure that the scope is in a neutral position and that the Olympus logo on the handle and the biopsy valve tab are outward facing for the entire insertion of the needle.



If the needle has been inserted in an incorrect orientation, **DO NOT** attempt to readjust the needle by rotating the bronchoscope adapter (see step 4c).



**Note:** Instead, remove the needle and start over in the correct position (see steps above). If you just rotate the bronchoscope adapter, you will run the risk of damaging the scope or the needle.



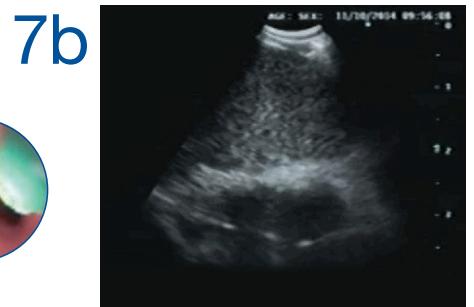
Secure the needle on the scope by pushing the bronchoscope adapter to the "lock position" until it clicks. **Tip:** Pull needle handle up to confirm secure attachment.



Turn the sheath adjuster knob to release it.



Adjust the sheath so that it is visible in the endoscopic view. Tighten the knob.



Locate the target area on the ultrasound image.

# ViziShot 2 EBUS-TBNA Needle Quick Reference Guide

**CAUTION:** This guide is only a summary of the ViziShot 2 EBUS-TBNA Needle Instructions for Use. For detailed operating instructions, be sure to follow the ViziShot 2 EBUS-TBNA Needle instruction manual included in the device package.

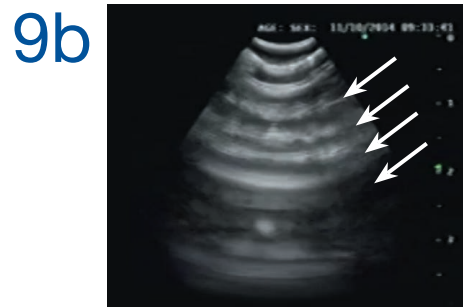
## ViziShot 2 Needle Steps for Use (continued)



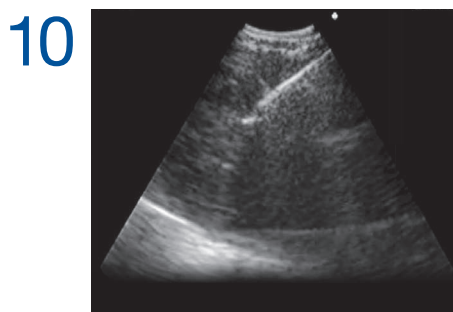
Press the needle adjuster to release it.



Advance the needle into the target.



**Note:** This shows an artifact in the lymph node. If an artifact is visible, adjust the EBUS scope tip until the artifact disappears.



Visualize needle entering the target lymph node.



Remove the stylet.



Attach the prepared syringe.



Apply suction by turning the stopcock to the parallel position.



Move the needle slider up and down several times while the needle is in the target area to obtain a sample.



Turn the stopcock to the horizontal position to release suction. Remove the syringe.

# ViziShot 2 EBUS-TBNA Needle Quick Reference Guide

**CAUTION:** This guide is only a summary of the ViziShot 2 EBUS-TBNA Needle Instructions for Use. For detailed operating instructions, be sure to follow the ViziShot 2 EBUS-TBNA Needle instruction manual included in the device package.

## ViziShot 2 Needle Steps for Use (continued)

16



Pull the needle slider upwards until it clicks. This retracts the needle into the sheath.

17



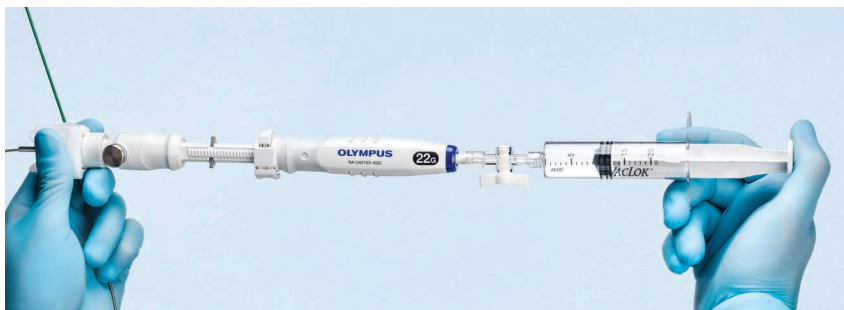
Pull the needle adjuster upwards and slide to lock it into position.

18



Place the scope in a neutral position. Unlock and remove the needle.

19



Unlock the needle adjuster and push the needle slider to extend the needle's distal end. Then connect a 5 to 20cc air filled syringe to the aspiration port.

20



Gently push the syringe plunger to expel a small drop of specimen on the slide.

21



Dispense the remaining specimen into the cell block container. Repeat this step as needed until entire specimen is ejected.

# ViziShot 2 EBUS-TBNA Needle Quick Reference Guide

**CAUTION:** This guide is only a summary of the ViziShot 2 EBUS-TBNA Needle Instructions for Use. For detailed operating instructions, be sure to follow the ViziShot 2 EBUS-TBNA Needle instruction manual included in the device package.

## Alternate Method for Extracting Specimen

- 1 If the specimen cannot be expelled with air alone, remove the syringe from the aspiration port and insert the stylet into the aspiration port to push out the specimen.



Olympus is a registered trademark of Olympus Corporation, Olympus America Inc., and/or their affiliates.