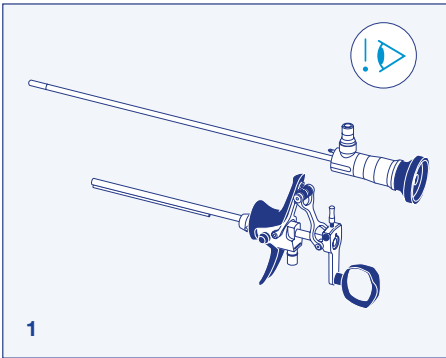
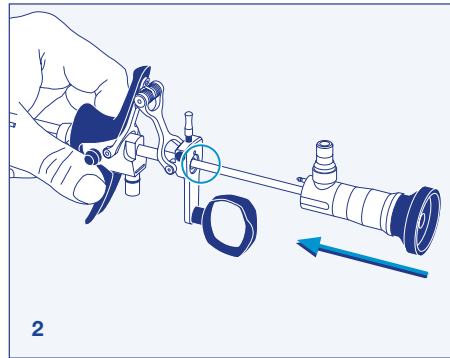


QUICK REFERENCE GUIDE

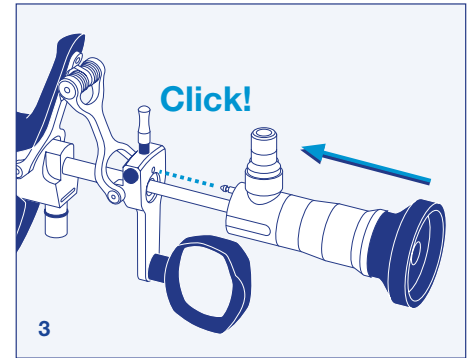
Hystero-Resectoscope Assembly



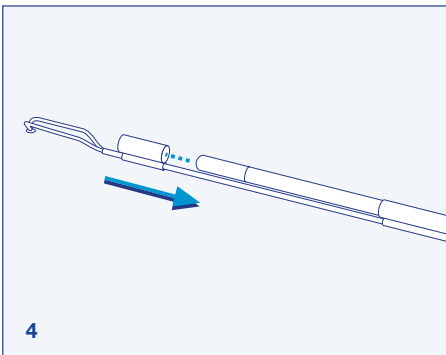
1
Handle all instruments with care. Before use inspect for damage such as dents and bending. Do not use defective instruments.



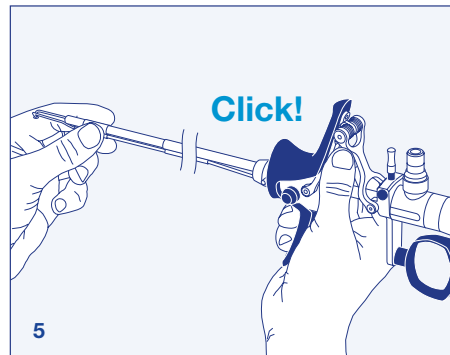
2
Guide the telescope with fingers while inserting into working element. Telescope should glide smoothly.



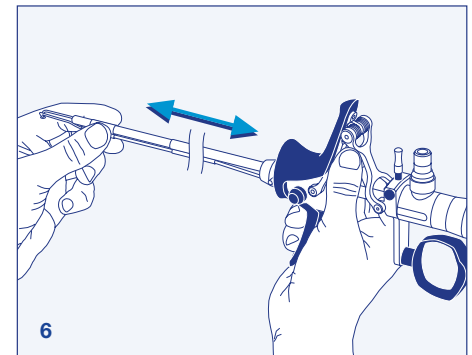
3
A click indicates that the working element and the telescope are attached properly. Make sure that the telescope does not hit the plate.



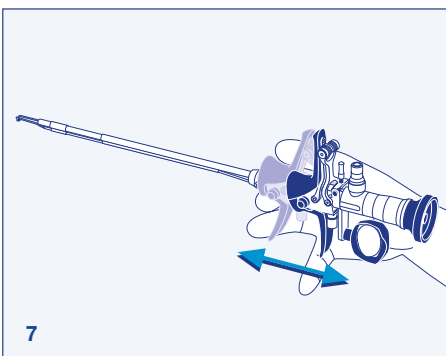
4
Insert the electrode through guiding tube of working element. Make sure that the stabilizing tube of the electrode is guided around the telescope.



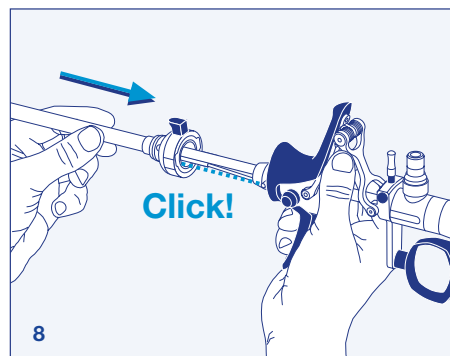
5
A click indicates that the electrode is properly attached.



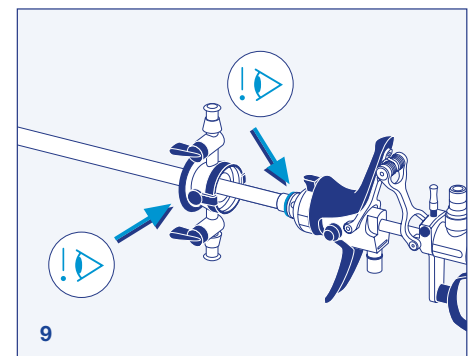
6
Check that the electrode is attached properly:
- grab the electrode at stabilizing tube
- pull gently in distal direction
- the electrode must remain fixed



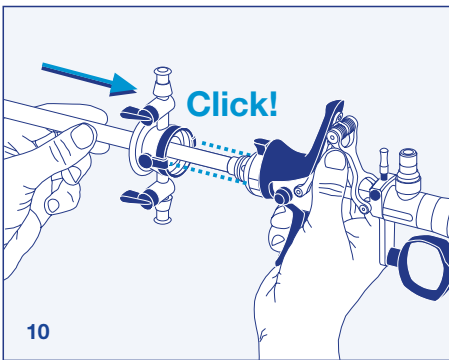
7
Test the working element. If all components are properly assembled, the working element moves easily.



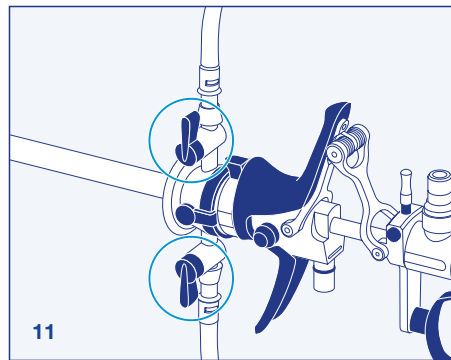
8
Attach the inner sheath.



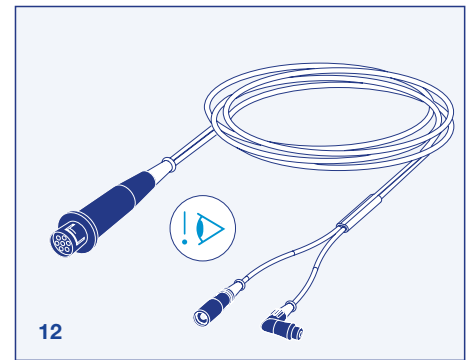
9
Select compatible outer sheath. Make sure that the yellow and blue rings are undamaged. Replace if necessary.



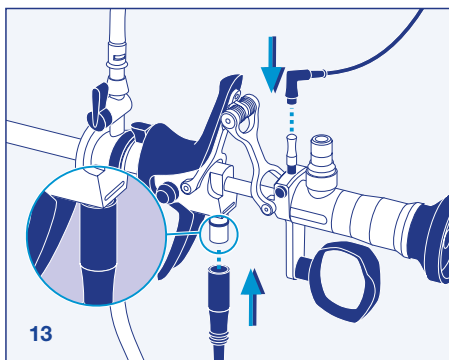
Attach compatible outer sheath.



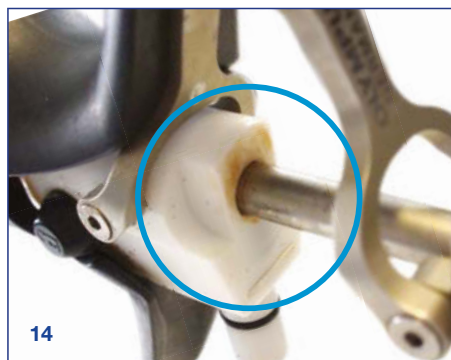
Use the irrigation system to keep the instrument as dry as possible. Check inflow and outflow arrows to make sure that inflow and outflow are connected properly.



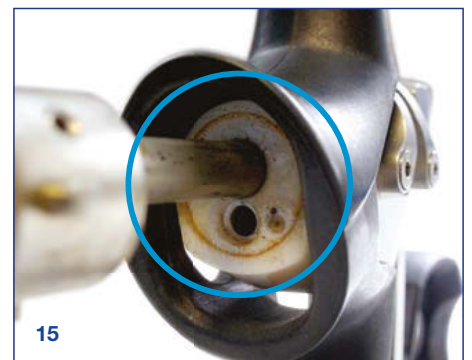
Thoroughly inspect the HF cable for broken insulation.



Make sure that the HF cable is properly connected to the working element.



Check that the PTFE body of the working element is white. Brownish residues are conductive and must be removed. Remove all residues from the white insulation body using an alkaline cleaning agent.



Default settings are:

- SalineCut** 200W/Effect 2
- SalineCoag** 120W/Effect 2

Suggested Plasma Electrode Settings

Uterus	PlasmaButton Plasma-OvalButton	PlasmaLoop- Small/Medium	PlasmaLoop-Large	PlasmaNeedle	PlasmaRoller
SalineCut	200W Effect 2/3	200W Effect 2	200W Effect 3	200W Effect 1	n/a
SalineCoag	120W Effect 2/3	120W Effect 2	120W Effect 3	120W Effect 1	120W Effect 2

Note:
For detailed information concerning effect settings, please review the IFU for the ESG-400. The data in this table are merely non-binding empirical values and no guarantee is provided as to their correctness. There is no substitute for the knowledge and skill of the operator and should thus only be seen as non-binding guidelines.

Olympus is a registered trademark of Olympus Corporation, Olympus America Inc., and/or their affiliates. | Medical devices listed may not be available for sale in all countries.