

ENDOSCOPE DISINFECTION WORKFLOW

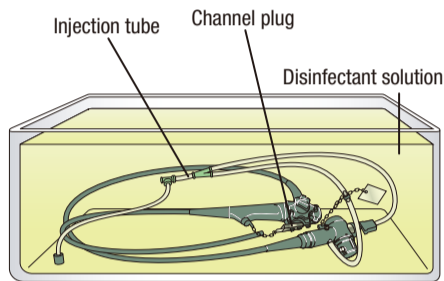
for EVIS EXERA II Duodenovideoscope TJF-Q180V



WARNING: This workflow is **a summary** of the steps necessary to properly reprocess your TJF-Q180V. Follow the detailed steps instructed in the latest **ENDOSCOPE REPROCESSING MANUAL** for the TJF-Q180V.

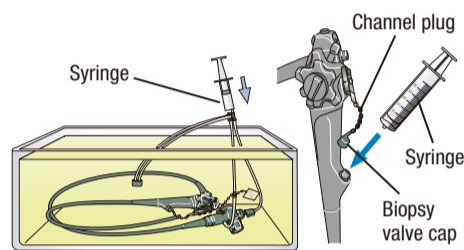
Manual High-Level Disinfection

1 Immerse the endoscope in the disinfectant solution



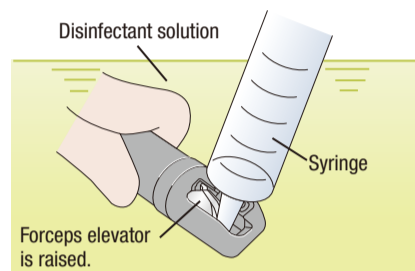
2 Flush all channels

While immersed:



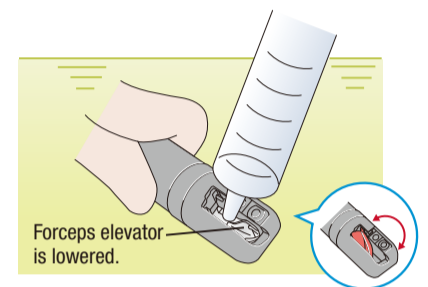
3 Flush the forceps elevator recess with the elevator raised

While immersed:



4 Flush the forceps elevator recess with the elevator lowered

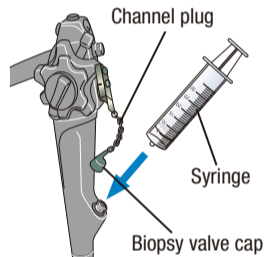
While immersed:



Manual High-Level Disinfection

5 Flush the instrument channel

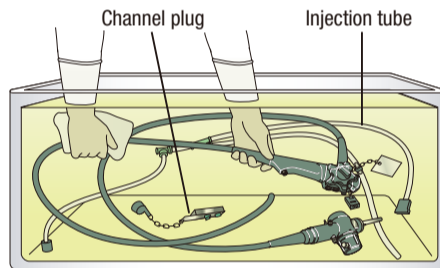
While immersed:



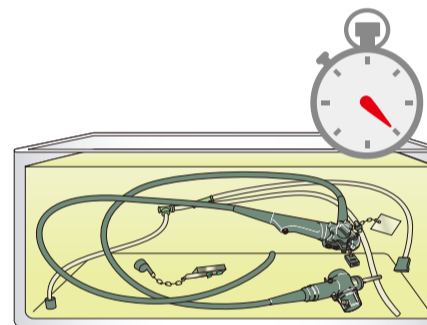
* Repeat steps 3 ~ 5

6 Immerse the endoscope in disinfectant solution

While immersed:

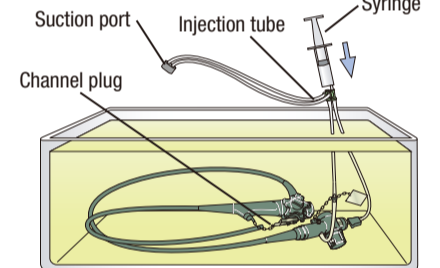


7 Soak all equipment



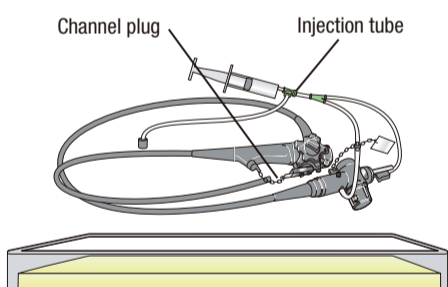
8 Flush the suction channel and air/water channels with air

While immersed:



Manual High-Level Disinfection

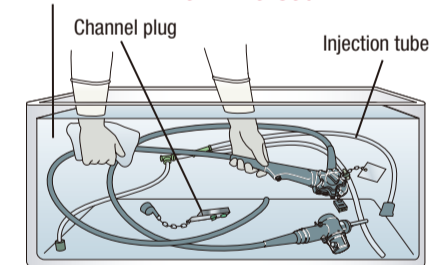
9 Remove the endoscope from disinfectant solution



Rinsing

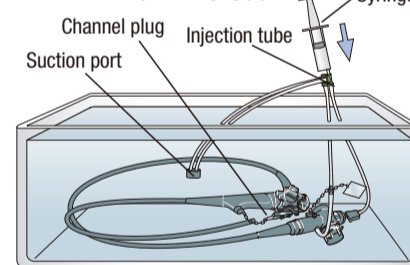
10 Rinse the external surfaces

While immersed:



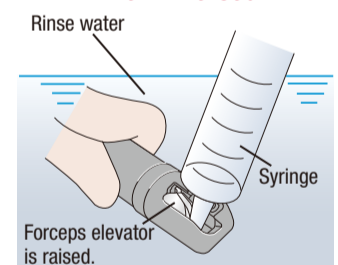
11 Rinse the channels

While immersed:



12 Rinse the forceps elevator recess with the elevator raised

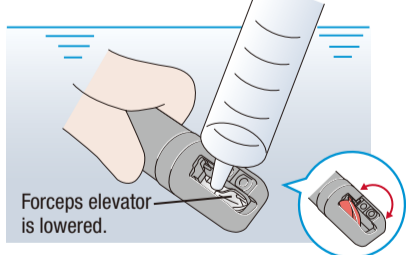
While immersed:



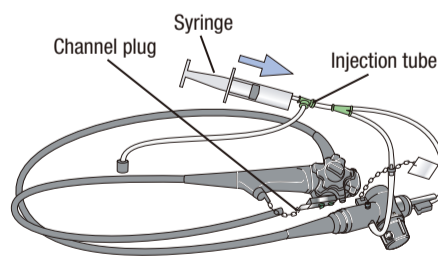
Rinsing

13 Rinse the forceps elevator recess with the elevator lowered

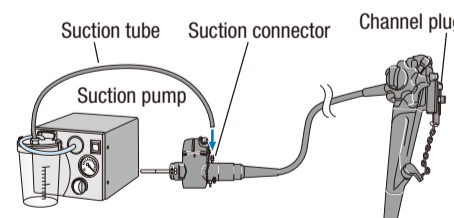
While immersed:



14 Flush channels with air

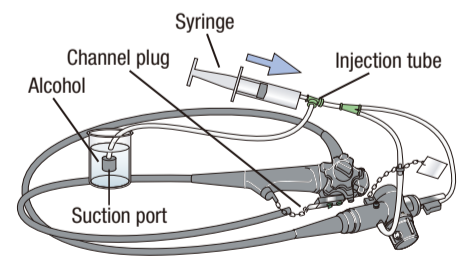


15 Aspirate air then dry the external surfaces



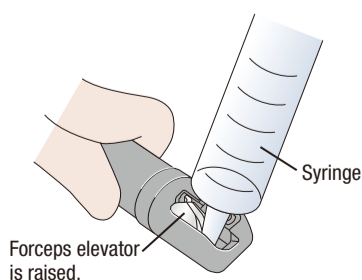
Drying

16 Flush the channels with alcohol

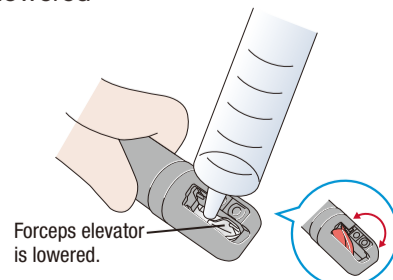


Drying

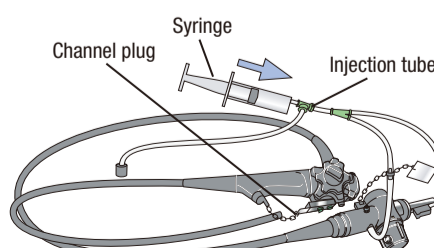
17 Flush the elevator recess with alcohol while the elevator is raised



18 Flush the elevator recess with alcohol while the elevator is lowered



19 Flush channels with air



20 Dry the external surfaces

