

## Long-Term Use of the CHF-B290

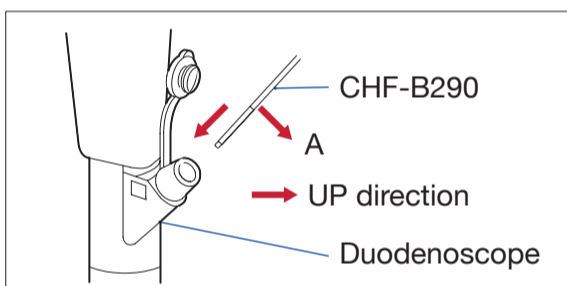
Supervisor: Yoshinori Igarashi MD, Toho University Omori Medical Center

This sheet is for quick reference only. Please refer to the instructions provided with the device for instructions in details.

### Step 1 Inserting the CHF-B290 into the Duodenoscope



Gently insert the CHF-B290 straight into the duodenoscope using short strokes. Restore the angulation of the duodenoscope as closely as possible to its original position. If resistance makes insertion of the CHF-B290 through the duodenoscope difficult, withdraw the duodenoscope slightly so that you can straighten the scope's insertion tube and bending section. You should now be able to insert the CHF-B290 smoothly without resistance.



#### When Not Using a Guidewire

Push the forceps elevator control lever as far as it will go in the "U" direction to raise the forceps elevator to the maximum limit. Then gently insert the CHF-B290.

- \* Apply a medical-grade, water-soluble lubricant to the insertion section or feed irrigation fluid in the irrigation channel of the duodenoscope.
- \* Confirm that the forceps elevator works normally.
- \* Insert the CHF-B290 using a guidewire, if necessary.

### Step 2 Extending from the Duodenoscope and Inserting into Biliary Tract

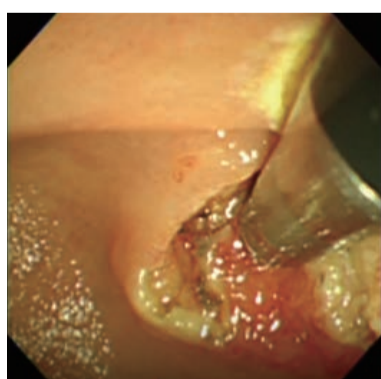


Lower the forceps elevator of the duodenoscope as far as possible (to the maximum limit basically), then extend the CHF-B290 a little.

#### When Not Using a Guidewire

When the tip of the CHF-B290 contacts the forceps elevator, lower the forceps elevator and extend the CHF-B290 from the duodenoscope.

- \* If you feel any resistance when inserting the endoscope, do not use force to insert it.



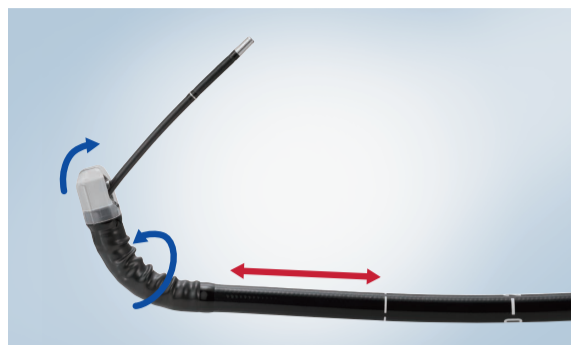
To insert into the biliary tract, position the duodenal papilla in the lower part of the duodenoscope endoscopic view. Insert the tip of the CHF-B290 into the opening of the papilla while observing the X-ray image to move it through the bile duct. Once you have passed through the bile duct, push the tip of the CHF-B290 while pushing duodenoscope gently towards the distal side. When inserting the duodenoscope into the biliary tract, using UP angulation will make the insertion easier.

- \* Observe the X-ray image to check the angulation of the CHF-B290. Refer to the image to ensure proper insertion of the CHF-B290 into the biliary tract.
- \* In some cases, you may not be able to use the basic insertion technique, depending on the anatomy of the intra-diverticular papilla or the papilla position on the proximal side. If so, insert the CHF-B290 using guidewire/angulation. Try to avoid using angulation of the duodenoscope if possible.

### Step 3 Maneuvering the CHF-B290 in Biliary Tract



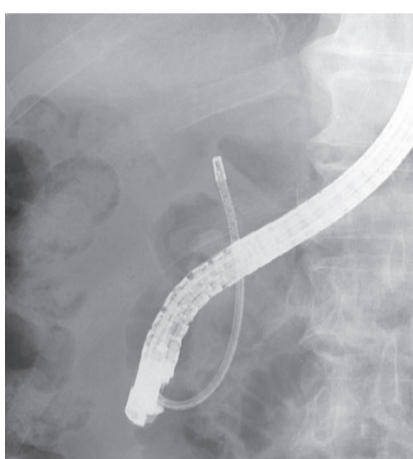
Once the CHF-B290 has been inserted into biliary tract, you can control its position by pushing, pulling, or twisting duodenoscope.



\* When inserting or withdrawing the CHF-B290, make sure the scope's forceps elevator is set to the minimum level. Inserting or withdrawing the CHF-B290 with the forceps elevator raised will apply stress to the device.

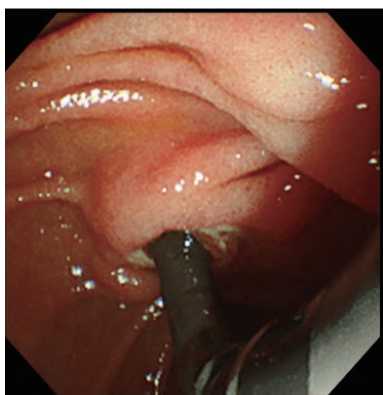
\* If it is difficult to position the CHF-B290 in the center of the biliary tract, it might be helpful to use a guidewire.

### Step 4 Inserting EndoTherapy Accessories into the CHF-B290



Significant resistance might be encountered when inserting EndoTherapy accessories at the bending section of the distal end. In this case, straighten the bent part of the insertion tube and the bending section of the duodenoscope as much as possible by pushing/pulling the duodenoscope/CHF-B290 while observing the X-ray image.

### Step 5 Withdrawing the CHF-B290 from the Biliary Tract into the Duodenoscope



#### Withdrawal from the Biliary Tract

Lower the duodenoscope's forceps elevator all the way and set the CHF-B290's UP/DOWN angulation control lever to the neutral position. Then gently withdraw the CHF-B290 from the papilla gently while monitoring it in the endoscopic view.

\* Be careful not to use too much force when withdrawing the CHF-B290. This could damage the equipment.



#### Returning to the Duodenoscope

While lowering the duodenoscope's forceps elevator and straightening the CHF-B290's bending section, pull the CHF-B290 gently back into the duodenoscope. If there is any resistance, withdraw and straighten the duodenoscope with the angulation control lever set to the "D" direction and/or straighten the duodenoscope after gently withdrawing to the stomach. Then pull the CHF-B290 back into the duodenoscope.

### Step 6 Storing the CHF-B290

When cleaning the CHF-B290, conduct a leakage test as instructed in the "REPROCESSING MANUAL". When storing the CHF-B290, straighten the insertion section at least 20 cm from the distal end.