



Kurs: KOLOSKOPIE UND POLYPEKTOMIE

Normale Anatomie und postoperative Befunde

S.U. Christl

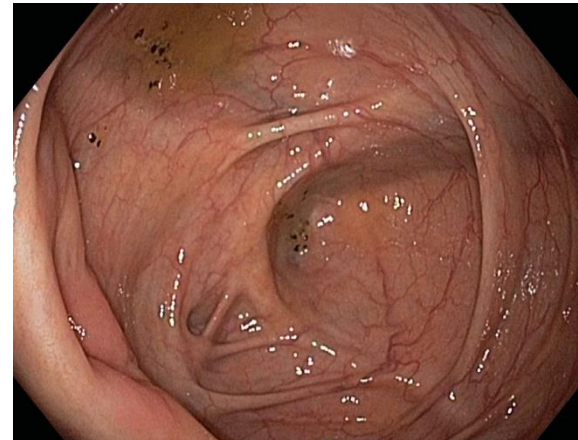
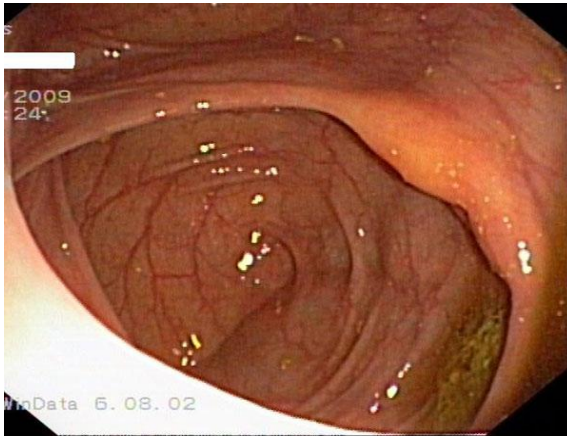
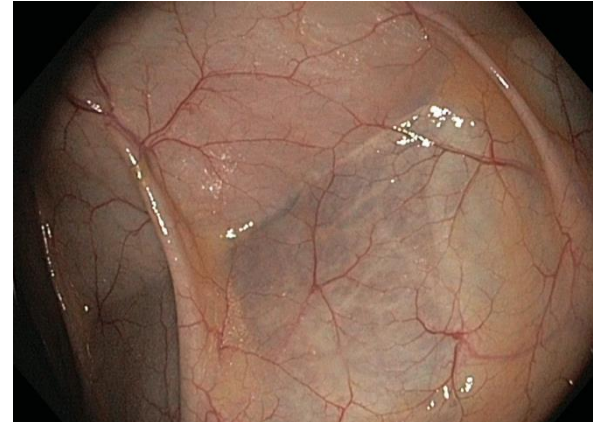
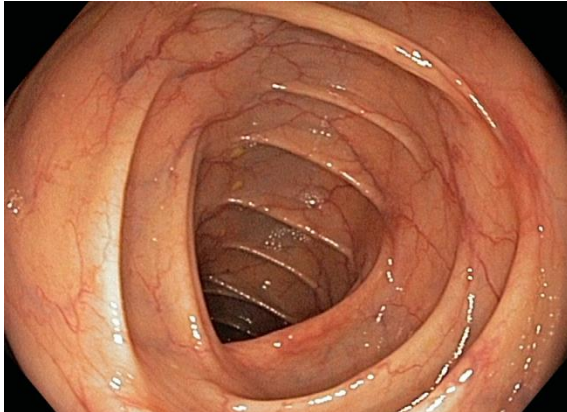
II. Medizinische Klinik

Gastroenterologisches Zentrum Harburg

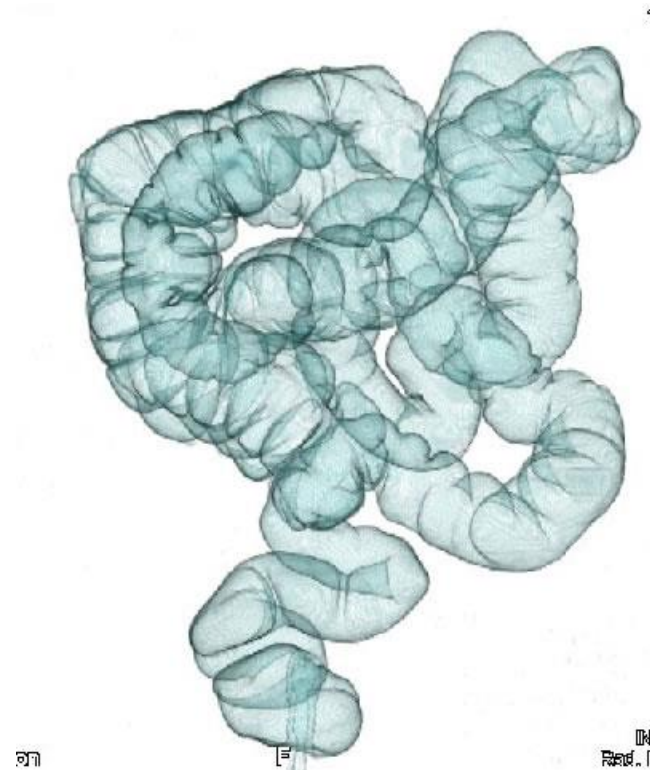
Asklepios Klinikum Harburg



Normale Anatomie



Colon elongatum / Dolichocolon



Segmentresektionen

Ileozökalresektion

Hemikolektomie rechts / links

Sigmaresektion

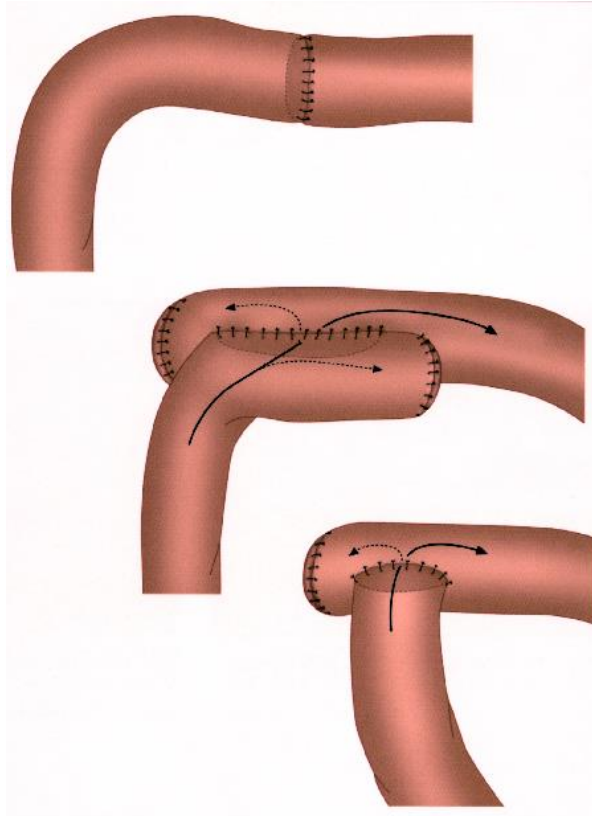
Anteriore Rektumresektion

Abdominoperineale Rektumextirpation

Kolektomie (subtotal oder total)

Pouch-Anastomosen

Kolostoma (+ / - Hartmann)

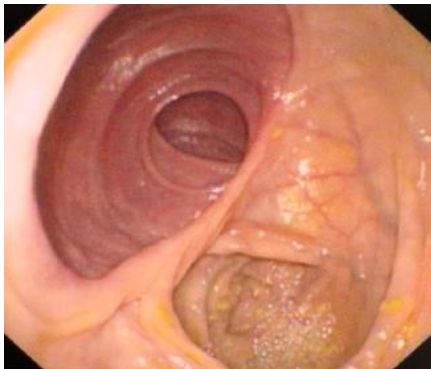
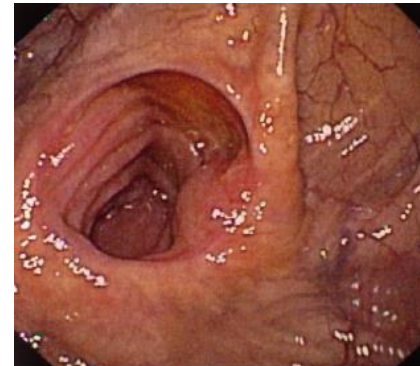


End-zu-End

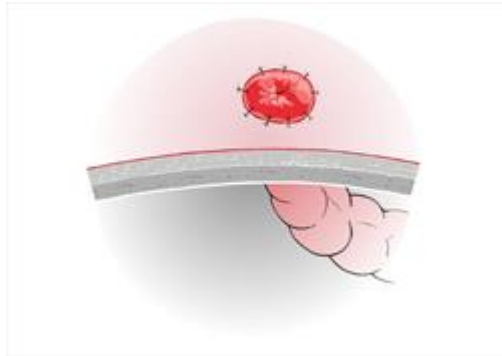
Seid-zu-seid

End-zu-Seid

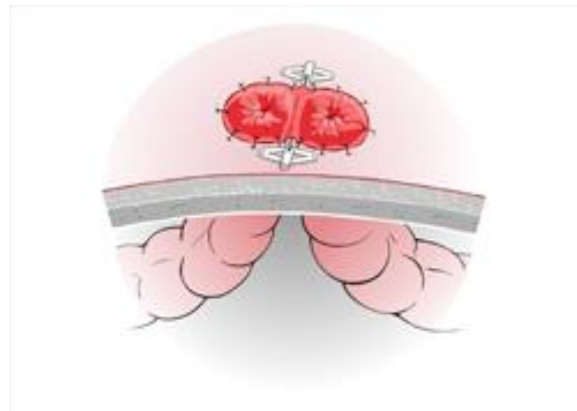
Anastomosen



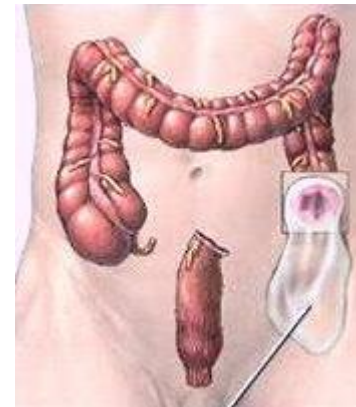
Entero- / Kolostoma



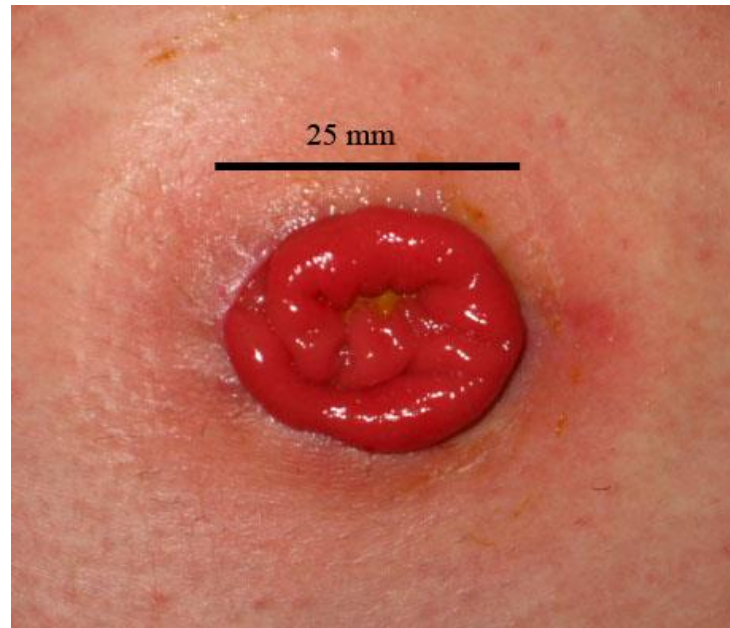
endständig



doppelläufig

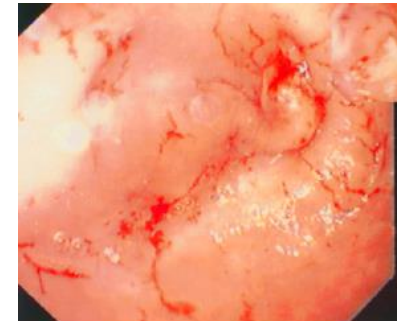
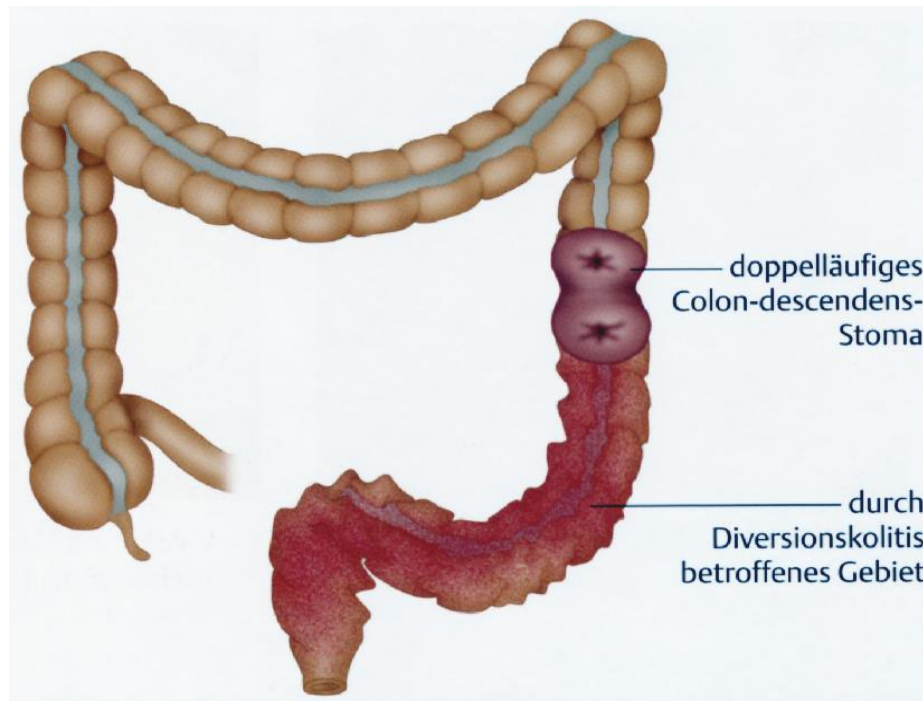


Hartmann-
Situation



Cave: für Darmlavage Anatomie beachten
ggf. orale Lavage + Einläufe

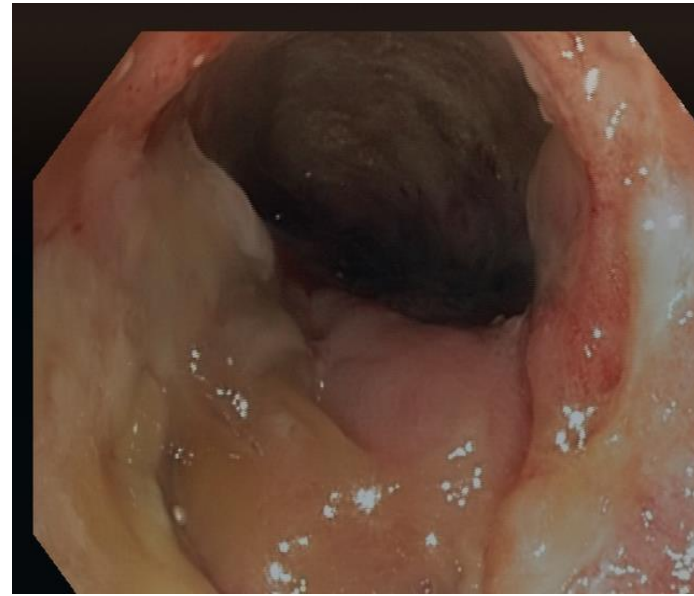
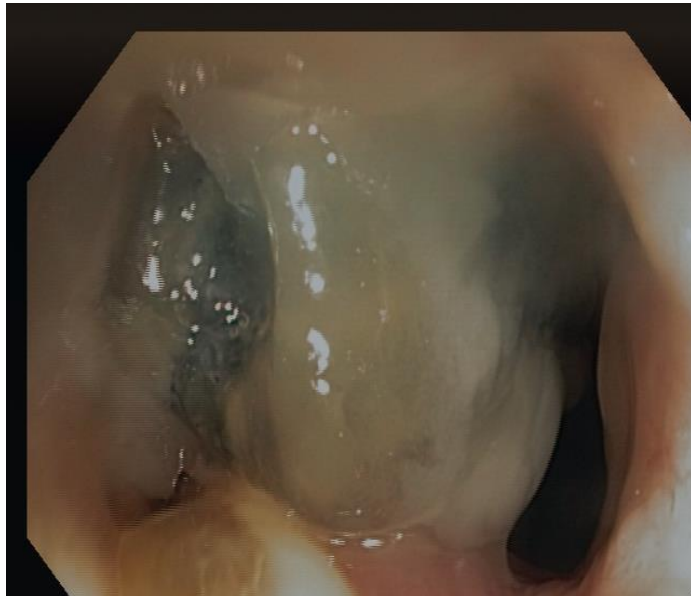
Diversionskolitis





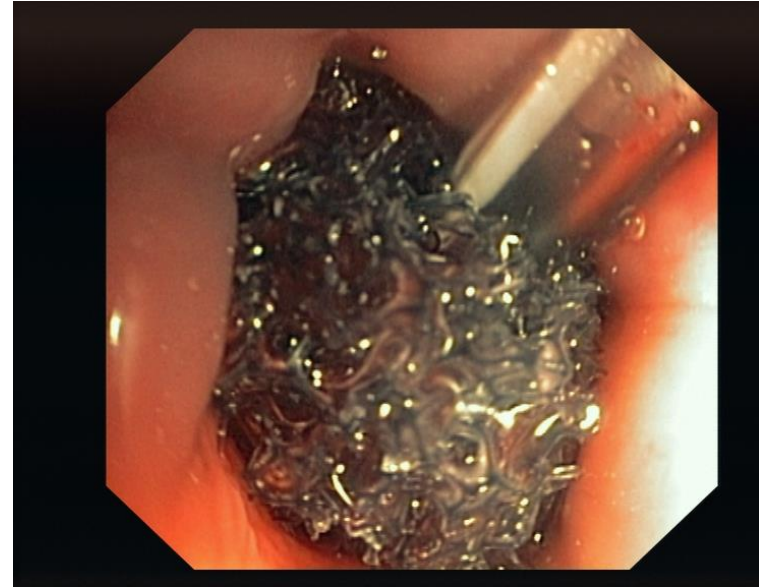
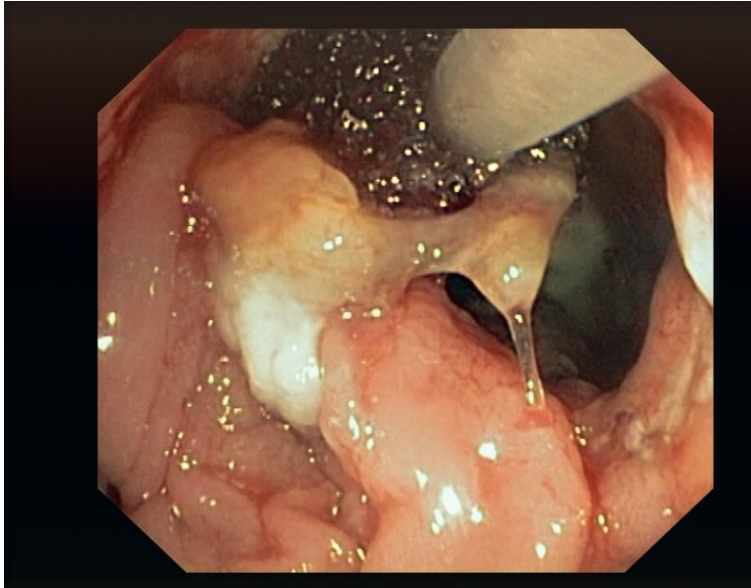
Ballondilatation (12-20 mm)

Anastomoseninsuffizienz



Endosponge®





Anastomoseninsuffizienz

