

VorticCatchV Retrieval Basket

Quick Reference Guide

Below are steps for VorticCatchV Retrieval Basket (FG-V451P). This instrument has been designed to be used with Olympus endoscopes to retrieve stones from the biliary tract.

CAUTION: This guide is only a summary of the VorticCatchV Retrieval Basket Instructions for Use. For detailed operating instructions, be sure to follow the VorticCatchV Retrieval Basket instruction manual included in the device package.

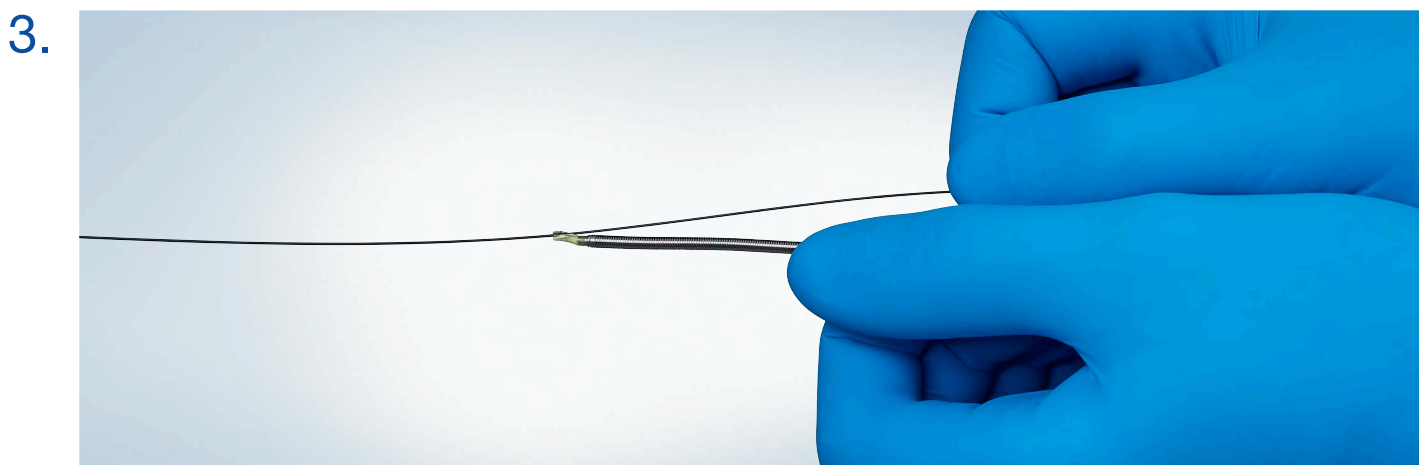
Using the VorticCatchV Retrieval Basket



Flush contrast injection port.



Close basket by pulling back on the control grip.



Backload basket on to guidewire. Take care to keep the distal tip of the basket parallel to the guidewire.

4. Advance basket to stone location within the biliary tract.

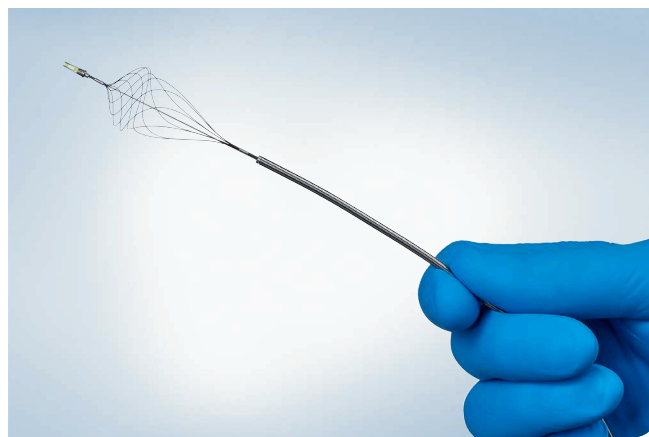
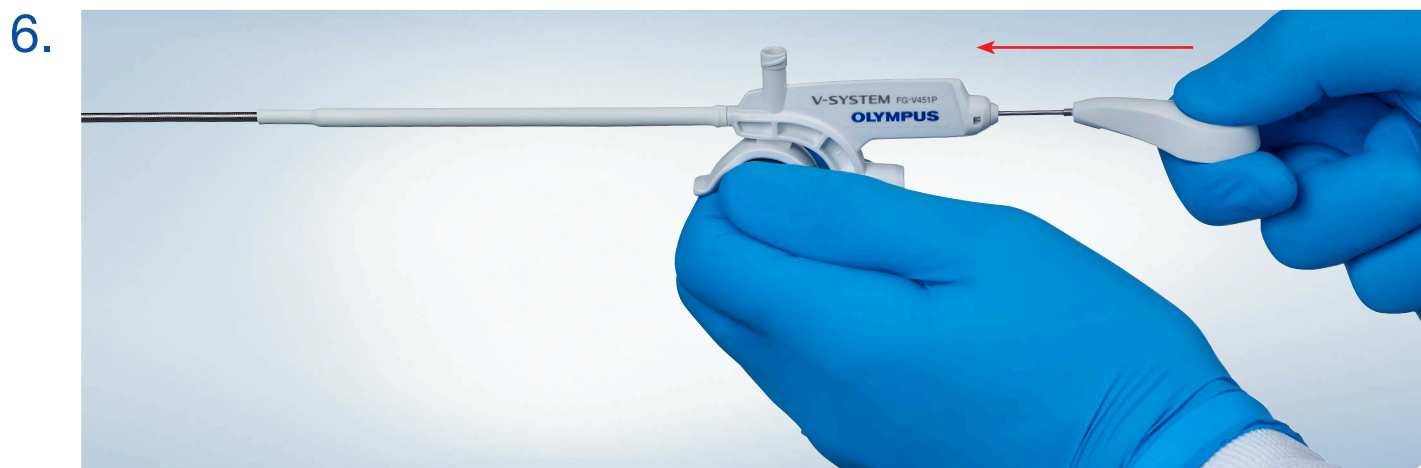
VorticCatchV Retrieval Basket

Quick Reference Guide

CAUTION: This guide is only a summary of the VorticCatchV Retrieval Basket Instructions for Use. For detailed operating instructions, be sure to follow the VorticCatchV Retrieval Basket instruction manual included in the device package.

Using the VorticCatchV Retrieval Basket (continued)

5. Separate basket tip from guidewire to minimize interference with basket closure.



Open basket within the duct by pushing the control grip against the handle.

7. Pull the basket sheath to capture and withdraw stone under fluoroscopic visualization. Basket does not need to be fully closed during retrieval.

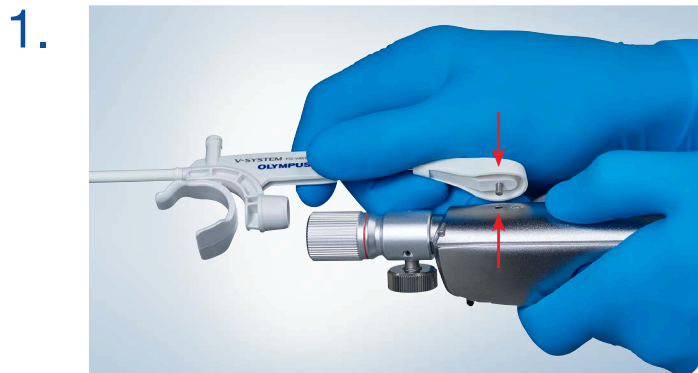
8. Open and close the basket to remove the retrieved stone

VorticCatchV Retrieval Basket

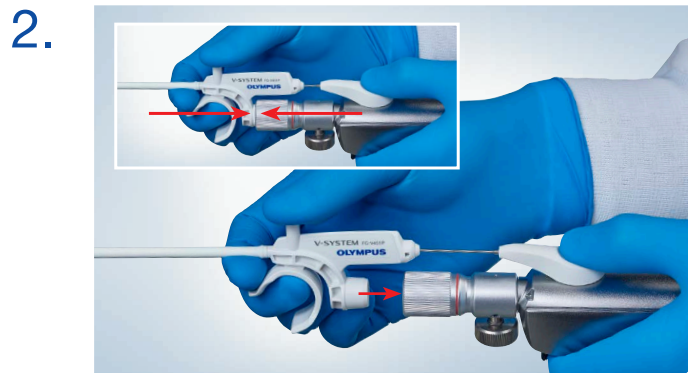
Quick Reference Guide

CAUTION: This guide is only a summary of the VorticCatchV Retrieval Basket Instructions for Use. For detailed operating instructions, be sure to follow the VorticCatchV Retrieval Basket instruction manual included in the device package.

In Case of Stone Impaction (Emergency Lithotripsy Using MAJ-441 Handle)



Insert pin on VorticCatchV control grip into the hole on the underside of the MAJ-441 lithotripsy handle.



Insert protrusion on VorticCatchV handle into recess on back of MAJ-441 lithotripsy handle.



Hold the VorticCatchV control grip against the MAJ-441 lithotripsy handle.



Set the MAJ-441 ratchet to ON.



Slowly rotate the MAJ-441 rotatable knob until basket is free from stone impaction.

Manufactured by: Olympus Medical Systems Corp. 2951 Ishikawa-cho, Hachioji-shi, Tokyo 192-8507, Japan.
Specifications, design and accessories are subject to change without any notice or obligation on the part of the manufacturer.
Olympus is a registered trademark of Olympus Corporation, Olympus America Inc., and/or their affiliates. | Medical devices listed may not be available for sale in all countries.

OLYMPUS

OLYMPUS AMERICA INC.
3500 Corporate Parkway, PO Box 610, Center Valley, PA 18034

For more information, contact your Olympus sales representative, or call 800-848-9024.
www.medical.olympusamerica.com
©2020 Olympus America Inc. All rights reserved.
Printed in USA OAIET0420QRG35999