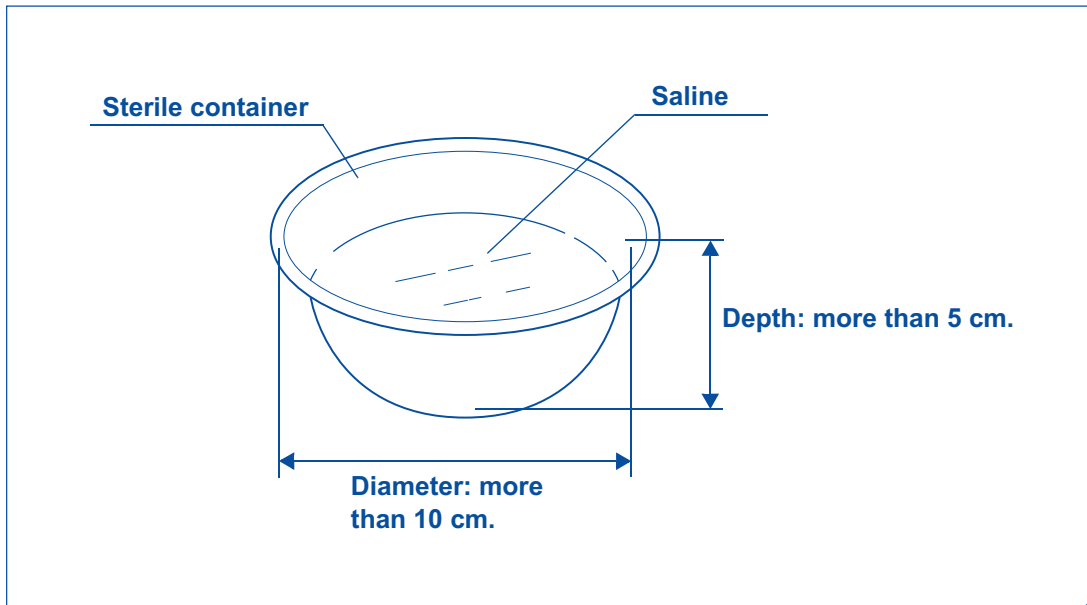


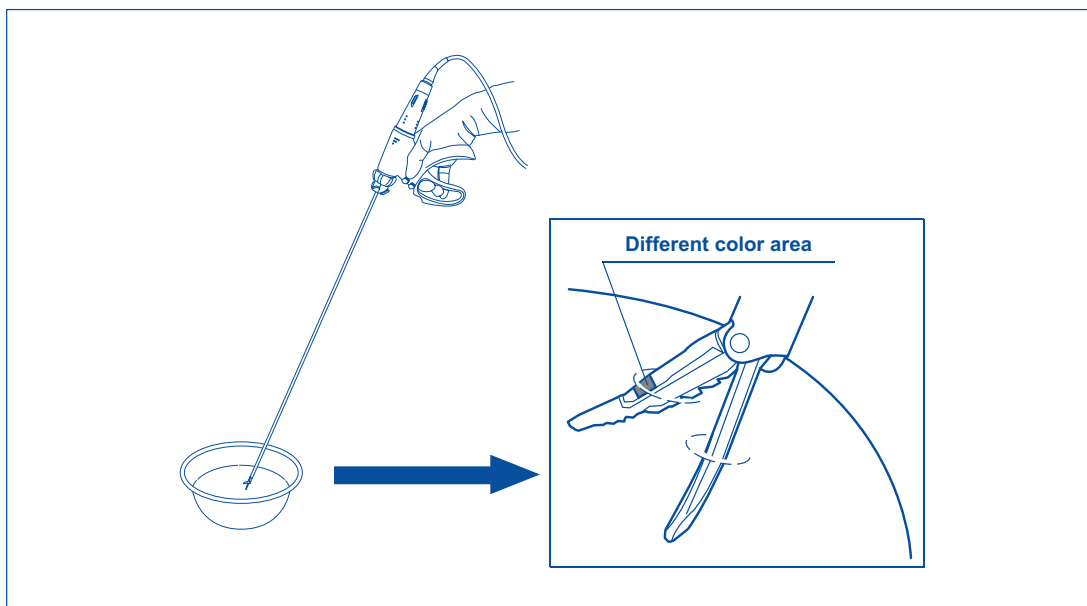
**Disclaimer:** Please refer to the complete IFU, which is supplied with each item of equipment and should be thoroughly read and understood prior to use of the equipment.

## Preparation

Prepare a sterile container (like a bowl) with dimensions similar to those shown below. Fill it with saline.



Open the THUNDERBEAT instrument grasping section and submerge only the distal half of the grasping section and the probe tip in saline.



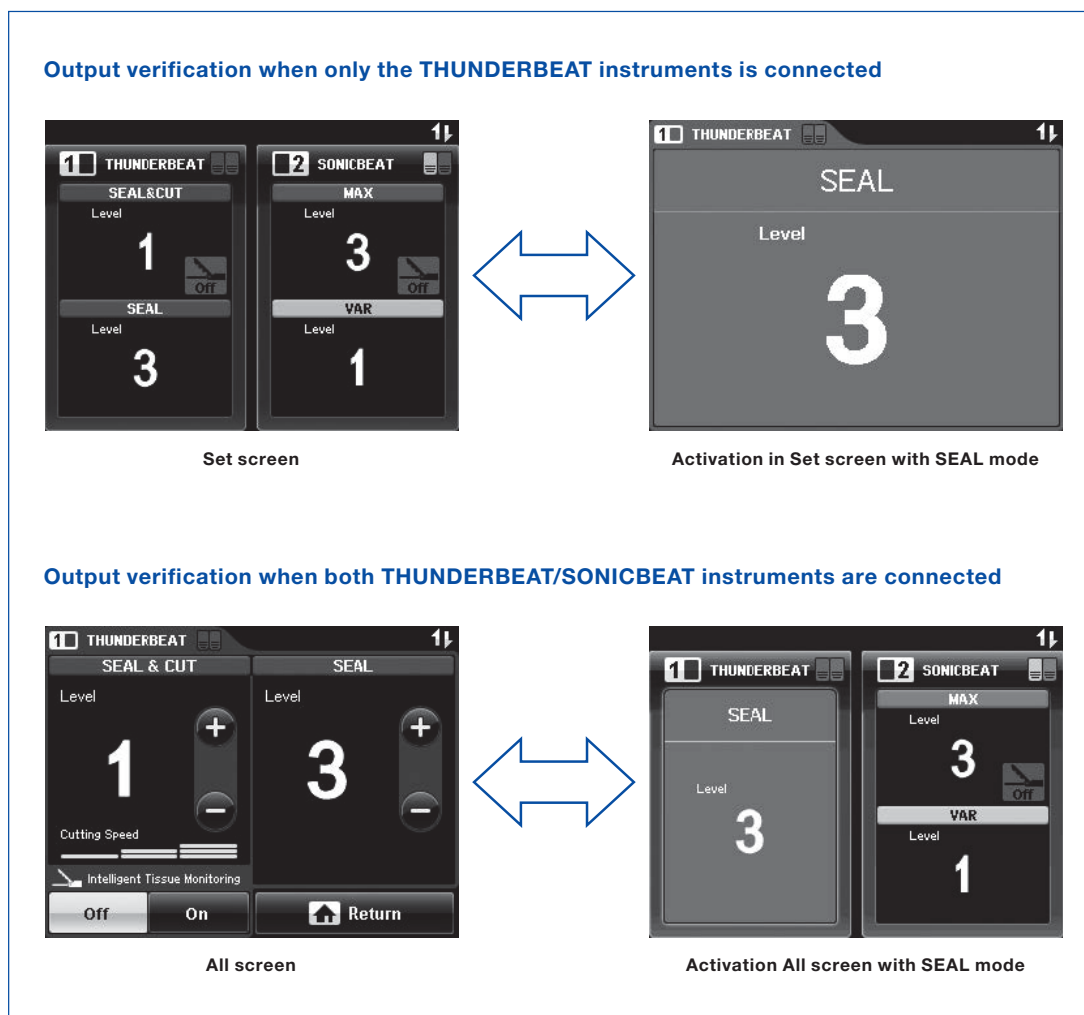
## Activation

Press and hold the SEAL button (blue) of the handswitch or the SEAL pedal (right pedal: blue) of the footswitch for the high-frequency (RF bipolar) output.

### Verifying the output

Confirm the following items during the SEAL mode output:

- The activation “All” screen or “Set” screen is displayed on the touch screen of the ultrasonic generator, no error window.
- The output tone sounds from the compatible electro-surgical generator.



### Activation stop

After the confirmation, release the SEAL button of the handswitch or the SEAL pedal of the footswitch.

### Cleaning

Wipe any remaining saline on the probe tip with dry, sterile gauze.

Specifications, design, and accessories are subject to change without any notice or obligation on the part of the manufacturer.