

Cautionary Note to Reprocess EVIS EXERA™ III Duodenovideoscope TJF-Q190V with OER-Pro™/OER-AW ENDOSCOPE REPROCESSOR

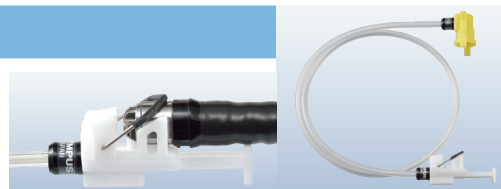
WARNING



This cautionary note is only a summary of the steps necessary to properly reprocess TJF-Q190V. Be sure to follow the detailed steps outlined in the latest OPERATIONAL MANUAL that is included with your OER-Pro™/OER-AW endoscope reprocessor.

1 Using CONNECTING TUBE MAJ-2358

Be sure to reprocess the TJF-Q190V with **CONNECTING TUBE MAJ-2358** in OER-Pro™/OER-AW endoscope reprocessors.



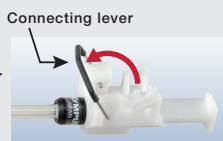
2 Reprocessing individually (NOT together with any other endoscope)

When reprocessing TJF-Q190V, be sure to reprocess individually. (Please do not reprocess TJF-Q190V in combination with any other endoscope.)

TJF-Q190V setup with MAJ-2358

01

Raise the connecting lever



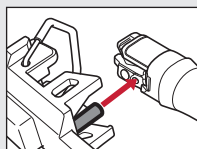
02

Instrument channel outlet

Lower the forceps elevator

Nozzle

Insert the endoscope distal end by aligning the nozzle of the endoscope side connector into the instrument channel outlet of the endoscope



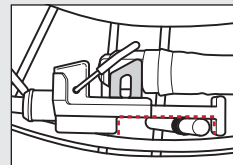
03

Lower the connecting lever to secure the distal end of the endoscope



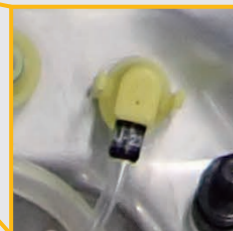
04

Set the distal end in the reprocessing basin while the groove of the endoscope side connector is attached to the pin on the proximal side of the retaining rack



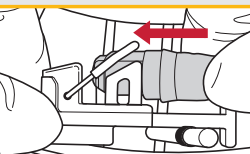
05

Connect the connecting tube with auxiliary water/elevator wire channel connector (yellow connector)



06

Gently push the endoscope distal end to ensure the nozzle of the endoscope side connector is in contact with the instrument channel outlet of the endoscope



* There are some versions of the OER-Pro™/OER-AW endoscope reprocessor IFU that instruct to raise the forceps elevator to an angle of approximately 45° when reprocessing an endoscope which has a forceps elevator in an OER-Pro™/OER-AW endoscope reprocessor. However, be sure to lower the forceps elevator when reprocessing the endoscope with the MAJ-2358 in OER-Pro™/OER-AW endoscope reprocessors.

Manufactured by



OLYMPUS MEDICAL SYSTEMS CORP.

2951 Ishikawa-cho, Hachioji-shi, Tokyo 192-8507, Japan Fax: (042)646-2429 Telephone: (042)642-2111

Distributed by

EC REP

OLYMPUS EUROPA SE & CO. KG

(Premises/Goods delivery) Wendenstrasse 14-18, 20097 Hamburg, Germany
(Letters) Postfach 10 49 08, 20034 Hamburg, Germany
Fax: (040)23773-4656 Telephone: (040)23773-0

KEYMED (MEDICAL & INDUSTRIAL EQUIPMENT) LTD.

KeyMed House, Stock Road, Southend-on-Sea, Essex SS2 5QH, United Kingdom
Fax: (01702)465677 Telephone: (01702)616333

OLYMPUS MOSCOW LIMITED LIABILITY COMPANY

Elektrozavodskaya str. 27 bld.8, 107023 Moscow, Russia
Fax: (7)495-926-7072 Telephone: (7)495-926-7077

OLYMPUS AMERICA INC.

3500 Corporate Parkway, P.O. Box 610, Center Valley, PA 18034-0610, U.S.A.
Fax: (484)896-7128 Telephone: (484)896-5000

OLYMPUS LATIN AMERICA, INC.

5301 Blue Lagoon Drive, Suite 290 Miami, FL 33126-2097, U.S.A.
Fax: (305)261-4421 Telephone: (305)266-2332

OLYMPUS (BEIJING) SALES & SERVICE CO., LTD.

A8F, Ping An International Financial Center, No. 1-3, Xinyuan South Road,
Chaoyang District, Beijing, 100027 P.R.C.
Fax: (86)10-5976-1299 Telephone: (86)10-5819-9000

OLYMPUS AUSTRALIA PTY LTD

3 Acacia Place, Notting Hill, VIC 3168, Australia
Fax: (03)9543-1350 Telephone: (03)9265-5400

OLYMPUS SINGAPORE PTE LTD

438B Alexandra Road #03-07/12, Alexandra Technopark Bld B, Singapore 119968
Fax: 6834-2438 Telephone: 6834-0010

OLYMPUS KOREA CO., LTD.

2F-3F Majestor City Tower One, 12, Seocho-daero 38-gil, Seocho-gu, Seoul,
06655, Korea
Fax: (02)6255-3210 Telephone: 1544-3202