

How to Prepare Single Use Endoscopic Lifting Device LA-400 FlexLifter

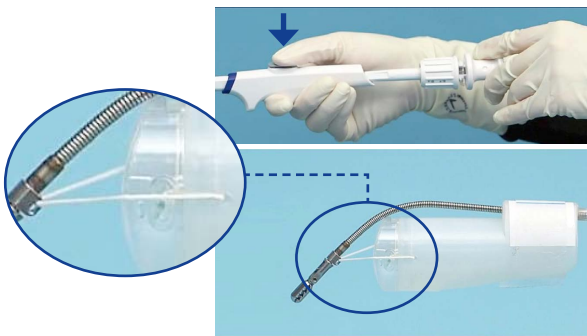


This workflow is a summary of the preparing steps necessary to properly use FlexLifter and does not include detailed steps. Follow the detailed steps including inspection instructed in the INSTRUCTIONS and Handling instruction of the hood and sleeve tape.

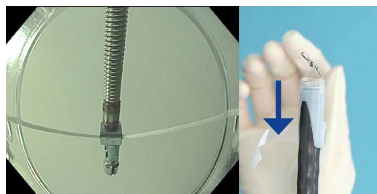
Follow inspection steps described in the Instructions for Use.

STEP 1 Attaching to the Endoscope

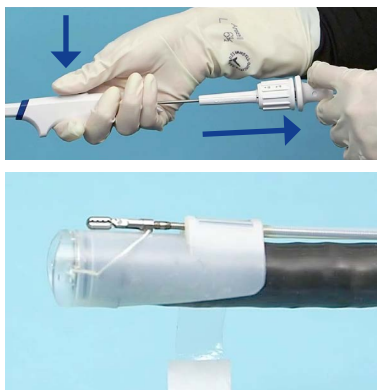
- 1 With the button of the position control portion pressed down, push in the handle until the thread is stretched straight.



- 2 Adjust the orientation of the cap so that the jaws are in the 12 o'clock position while looking at the endoscopic screen. Push in the hood until the distal end of the endoscope is mounted inside the cap without gap.



- 3 Pull in the handle the back with the button pushed down.



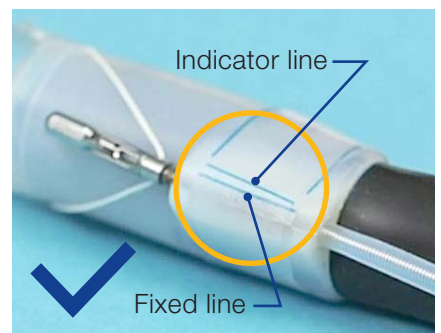
* Before attaching the FlexLifter, wipe off any mucus, blood or lubricant on the end of the endoscope.

STEP 2 How to Fix the Hood on the Distal End of the Endoscope

Straighten the insertion portion of the endoscope. Peel off the backing of the hood tape. Keeping the hood tape stretched, wrap it around the hood so that the indicator line crosses the fixed line.



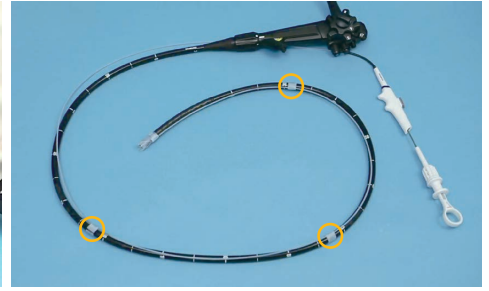
Make sure that the indicator line crosses the fixed line for 1-2mm.



STEP 3 How to Fix the Sleeves on the Insertion Portion of the Endoscope

Place the tube sheath along the insertion portion of the endoscope. Attach all three sleeves to the insertion portion of the endoscope.

Keeping the sleeve tape stretched, wrap it around the sleeve so that the indicator line crosses the fixed line. Secure the two remaining sleeves the same way.



STEP 4 Operation Inspection of Functions

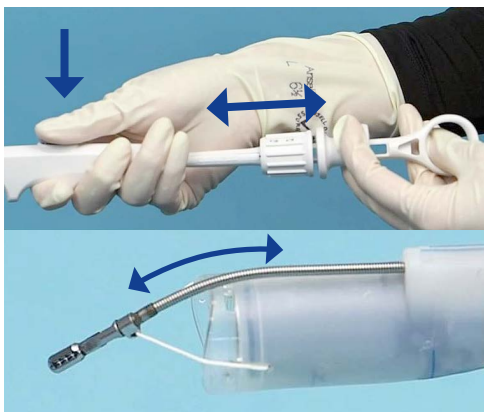
1 Inspect the bending mechanism of the endoscope to confirm that the bending section of the endoscope bends smoothly.



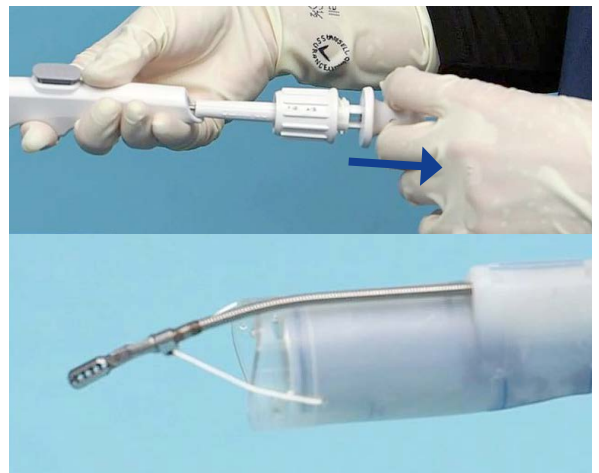
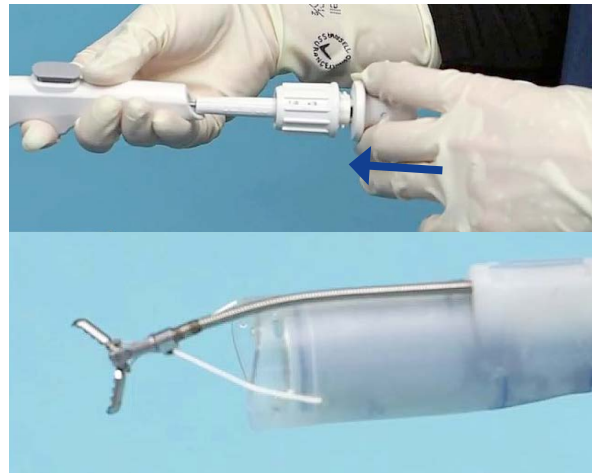
2 Hold the cap with your fingers and pull it gently to make sure it is securely attached to the distal end of the endoscope.



3 While pressing the button, push in the handle to confirm that handle operation is easy.



4 Make sure that the jaws move smoothly.



Scan the QR code to watch the movie of these procedures

