

Ultrasound Gastrovideoscope Precleaning Guide

For: GF-UCT180, GF-UE160-AL5, TGF-UC180J

CAUTION: This guide is only a summary of the steps necessary to properly clean your endoscope. Be sure to follow the detailed steps outlined in the INSTRUCTION MANUAL that was included with your endoscope purchase.

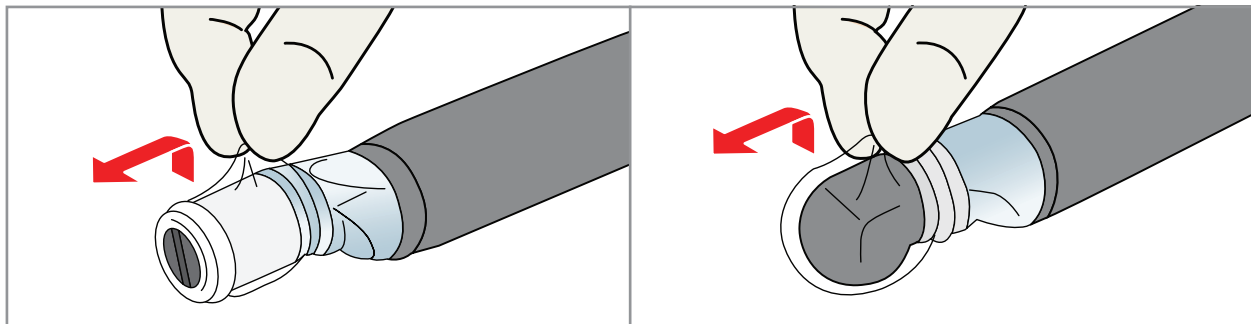
Equipment Needed

Prepare the following equipment, and wear appropriate protective equipment:

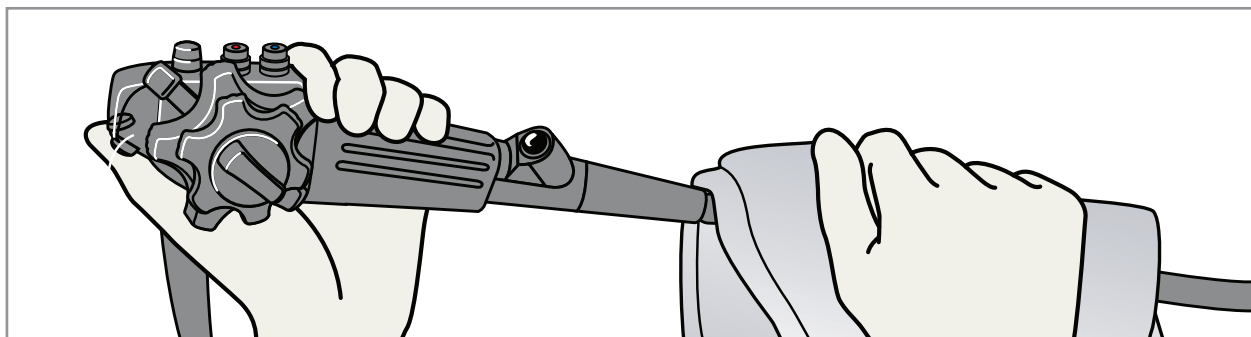
- Personal protective equipment
- Clean water
- Clean, lint-free cloth
- Air/water channel cleaning adaptor (MAJ-629)
- 500 ml containers
- Washing tube (MH-974)
- Detergent solution
- 5 cc syringe

PRECLEANING — Immediately After Use:

- 1 Turn **OFF** the video processor, light source, and ultrasound system.
- 2 In a clean 500 ml container, prepare clean water.
- 3 In another clean 500 ml container, prepare a compatible detergent solution at the temperature and concentration recommended by the detergent manufacturer.
- 4 Remove and discard the balloon if attached.



- 5 Using a lint-free cloth soaked in the detergent solution, wipe down the entire insertion tube, from the boot at the control section to the distal end. Gently wipe the ultrasound transducer.

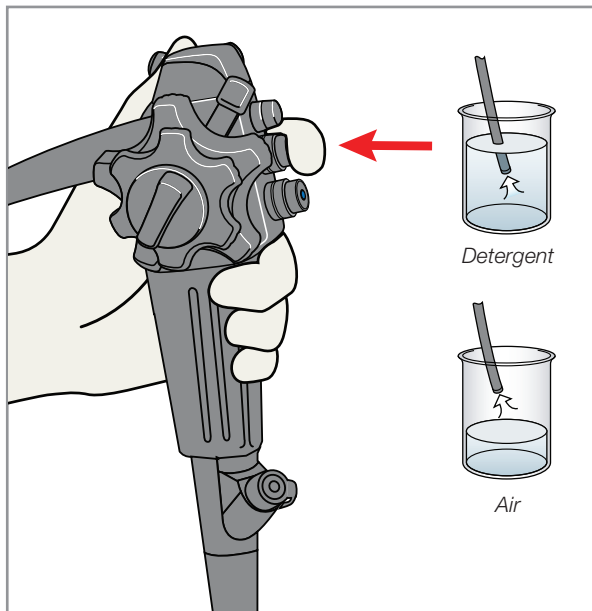


Ultrasound Gastrovideoscope Precleaning Guide

CAUTION: This guide is only a summary of the steps necessary to properly clean your endoscope. Be sure to follow the detailed steps outlined in the INSTRUCTION MANUAL that was included with your endoscope purchase.

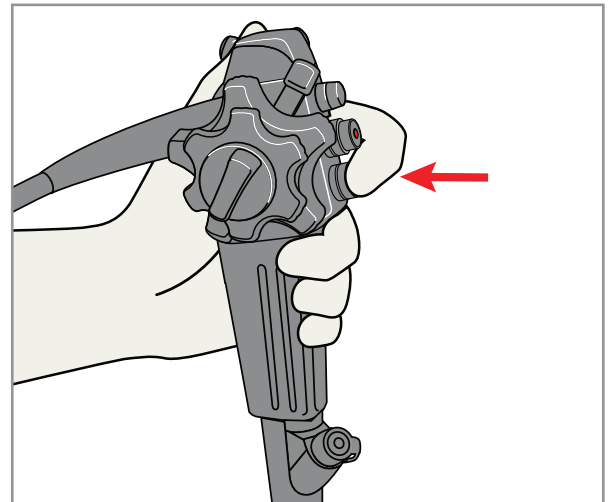
PRECLEANING — Immediately After Use: (continued)

- 6 Turn **ON** the suction source.
- 7 Attach the biopsy valve cap and ensure it is closed (e.g. MAJ-853).
- 8
 - a. Immerse the distal end of insertion section in detergent solution, and depress the suction valve to first stage to aspirate the detergent for 30 seconds.
 - b. Depress the suction valve completely to aspirate detergent for 30 seconds.
 - c. Remove the distal tip from detergent solution, and depress the suction valve to first stage to aspirate air for 10 seconds.
 - d. Depress the suction valve completely to aspirate air for 10 seconds.

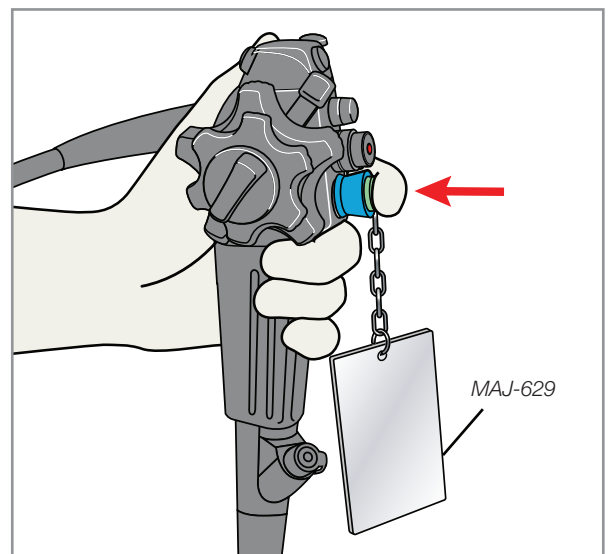


- 9 Turn **OFF** the suction source and turn **ON** the light source.

- 10 Depress the air/water valve (MAJ-1444) completely to feed water into the balloon channel.



- 11 Switch **OFF** the airflow regulator on the light source.
- 12 Detach the air/water valve from the endoscope, and place it in the detergent solution.
- 13 Attach the air/water channel cleaning adaptor (MAJ-629), and set the airflow to **HIGH**.



Ultrasound Gastrovideoscope

Precleaning Guide

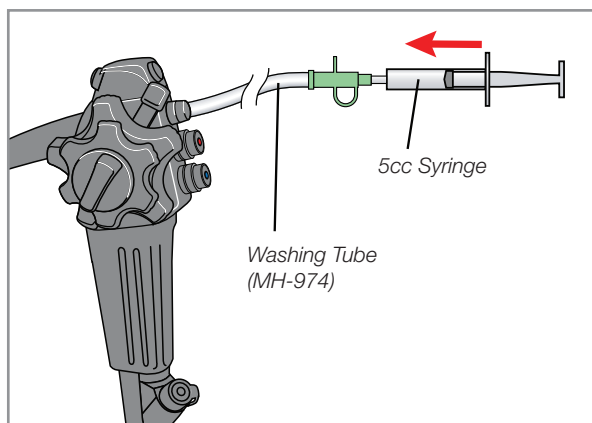
CAUTION: This guide is only a summary of the steps necessary to properly clean your endoscope. Be sure to follow the detailed steps outlined in the INSTRUCTION MANUAL that was included with your endoscope purchase.

PRECLEANING — Immediately After Use: (continued)

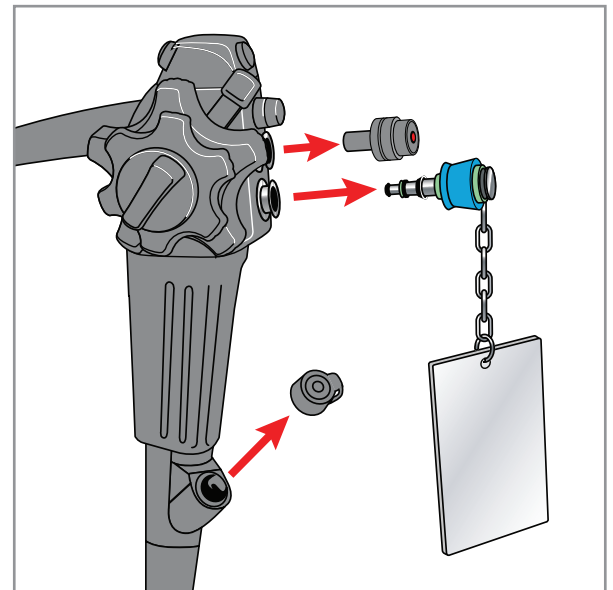
- 14**
- a. Immerse the distal end of the insertion tube in clean water.
 - b. Depress the button of the air/water channel cleaning adaptor (MAJ-629), and flush water for 30 seconds.
 - c. Release the air/water channel cleaning adaptor (MAJ-629) button to flush air for 10 seconds.

15 Turn **OFF** the light source.

- 16** For the GF-UCT180 scope:
- a. Attach the washing tube (MH-974) to the elevator channel plug.
 - b. Fill and attach the 5 cc syringe to the Luer port of the washing tube and slowly flush the elevator wire channel with 15 ml of the detergent. Confirm that no air bubbles exit the distal end during the third flush. If air bubbles still exit, flush the channel with the detergent until no air bubbles exit.
 - c. Fill and attach the 5 cc syringe to the Luer port of the washing tube and slowly flush the elevator wire channel with 15 ml of the water.
 - d. Fill and attach a clean 5 cc syringe to the Luer port of the washing tube and flush the elevator wire channel with 5 ml of air.
(See Step 13 for illustration.)



- 17** Detach all accessories from the endoscope:
- a. Detach the ultrasound cable from the electrical connector of the endoscope.
 - b. Detach the videoscope cable from the electrical connector of the endoscope.
 - c. Detach the suction tube from the suction connector on the endoscope connector.
 - d. Detach the metal tip of the water container from the air/water supply connector on the endoscope connector.
 - e. Insert the metal tip of the water container tube into the tip receptacle on the lid of the water container.



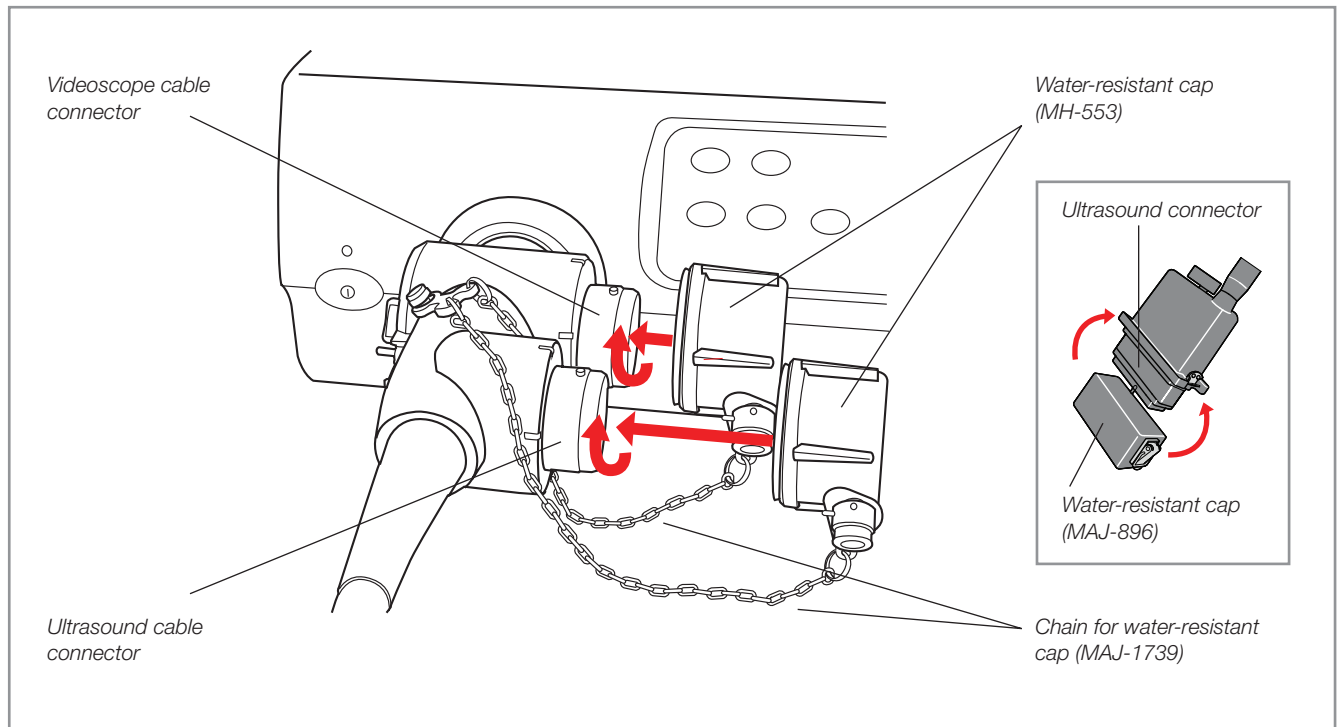
- 18** Detach the endoscope from the light source.

Ultrasound Gastrovideoscope Precleaning Guide

CAUTION: This guide is only a summary of the steps necessary to properly clean your endoscope. Be sure to follow the detailed steps outlined in the INSTRUCTION MANUAL that was included with your endoscope purchase.

PRECLEANING—Immediately After Use: (continued)

- 19 Confirm that the water-resistant caps are dry and free of debris, and attach the water-resistant caps.



- 20 Transport the endoscope to the reprocessing area in a covered container.
- 21 Detach the suction valve, air/water channel cleaning adaptor and biopsy valve from the endoscope and place in detergent solution.

For complete product details see Instructions for Use.