

FLEXIBLE ENDOSCOPE CLEANING & DISINFECTION GUIDE

For use with ENF-VH, ENF-V3, ENF-XP, ENF-P4, ENF-GP, ENF-GP2, ENF-V2, ENF-VQ

PRECLEANING

1. Wipe the insertion tube



Gently wipe the external surfaces of the insertion tube with a cloth moistened in detergent solution.



LEAKAGE TESTING

2. Attach the tester



Attach the leakage tester to the venting connector on the endoscope.

3. Apply pressure

When using MB-155 with MU-1 or the light source



Connect MB-155 to the maintenance unit (MU-1) or the light source and turn the power switch on.

OR

When using WA23070A or WA23080A or A2377



Close the pressure release lever. Press the hand pump so that the pointer stays within the green area.

4. Observe



CAUTION: If a leak is detected, remove from water and contact Olympus.

Immerse the entire endoscope in water, observe for 30 seconds while angulating the bending section and confirm that there is no continuous series of bubbles.

5. Detach the tester



Remove the endoscope from the water and release the air pressure in the endoscope.* Detach the leakage tester from the endoscope.

MANUAL CLEANING

6. Clean the surfaces



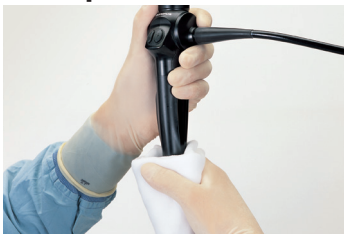
Immerse the endoscope in detergent solution. Using a lint-free cloth, gently wipe all debris from the endoscope's external surfaces. Soak in detergent solution for the recommended time.

7. Rinse the endoscope



Immerse the endoscope in water. Using a clean, lint-free cloth, thoroughly rinse and wipe the endoscope.

8. Wipe the surfaces



Remove the endoscope from water. Use a soft lint-free cloth to remove excess moisture from the endoscope and cleaning accessories in preparation for disinfection.

DISINFECTION

9. Disinfect the endoscope



Immerse the endoscope in the disinfectant solution. Soak for the time specified by manufacturer.

RINSING

10. Rinse the surfaces



Remove the endoscope from the disinfectant solution and immerse in water. Using a sterile, lint-free cloth, thoroughly rinse and gently wipe all external surfaces.

11. Wipe the surfaces



Gently wipe and dry the endoscope with a sterile, lint-free cloth.

12. Wipe the surfaces with alcohol



Using a sterile, lint-free cloth moistened with alcohol, thoroughly and gently wipe the external surfaces of the endoscope.

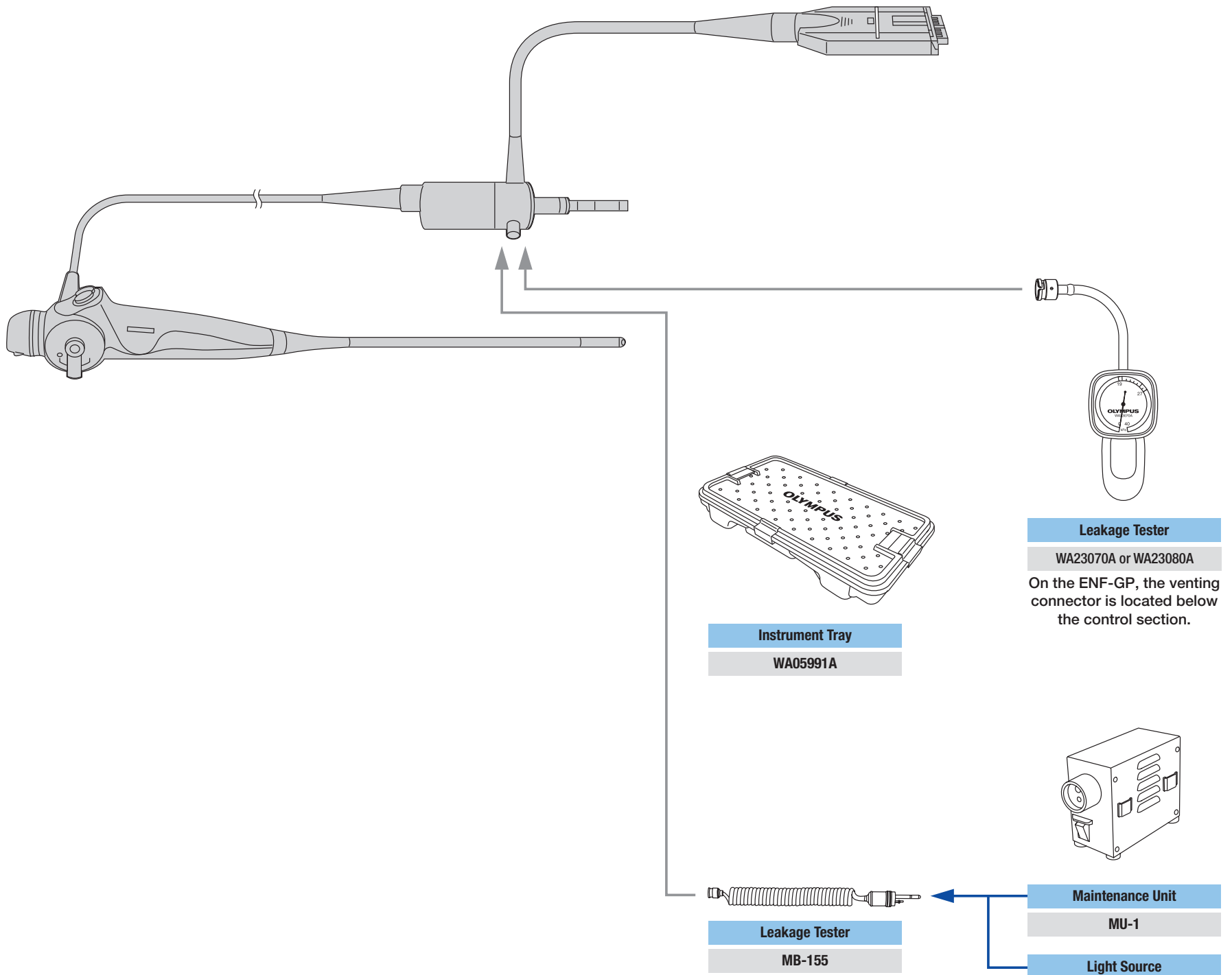


This guide is only a summary of the steps necessary to properly reprocess your endoscope. Follow the detailed steps outlined in the ENDOSCOPE REPROCESSING MANUAL that was included with your endoscope.

* When using WA23070A or A2377, open the pressure release lever.

* When using MB-155, turn the light source or MU-1 off and detach the leakage tester from the air source.

REPROCESSING TOOLS



- Clean, disinfect, sterilize each attachment and cleaning accessory according to its instruction manual.
- Always wear personal protective equipment when cleaning, disinfecting, or sterilizing an endoscope.
- ALL channels of the endoscope MUST be cleaned and high-level disinfected or sterilized during EVERY reprocessing cycle, even if the channels were not used during the previous patient procedure.
- Decisions regarding what methods of cleaning, disinfection and sterilization should be used are the responsibility of trained specialists.
- When you use detergent solution and disinfectant solution, always follow the manufacturer's recommendations regarding temperature and soaking time.

Always refer to the instruction manual for use for the device.