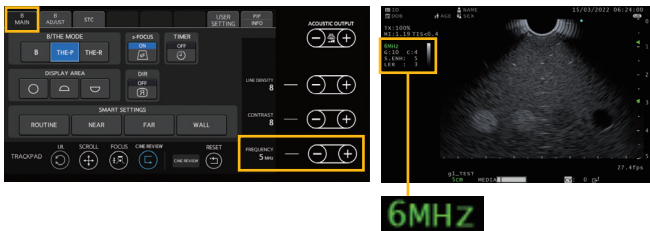


ENDOSCOPIC ULTRASOUND CENTER OLYMPUS EU-ME3

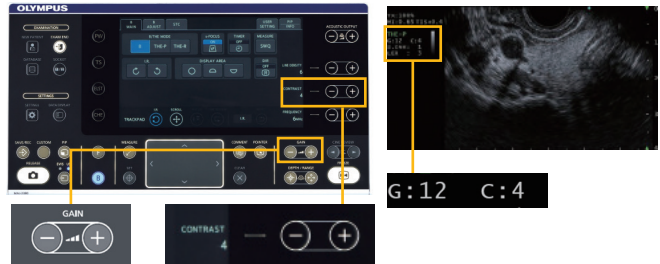
Frequently Used Functions

Switching the Frequency



Press the Frequency [+] or [-] key to switch the ultrasound transmission frequency. This cannot be changed when using THE mode.

Adjusting Gain / Contrast



Press the [+] or [-] key for Gain or Contrast.

Turning Enhance On



Press a button in ENHANCE section and turn on ENHANCE.

STRUCTURE ENHANCE

Image processing that reduces speckle noise while highlighting the boundaries of structures. Processing level can be adjusted with the [+] or [-] key for Adjust key 1.

ECHO ENHANCE

Image processing that increases the overall contrast of an image while reducing noise.

BRIGHTNESS ENHANCE

Image processing that increases contrast while maintaining the brightness level of the entire image.

Switching to THE Mode



THE (THE-P / THE-R)

This uses the harmonic component bounced back from the tissue for imaging.

Press the mode selector buttons to switch the mode.

THE-P THE mode that prioritizes penetration depth.

THE-R THE mode that prioritizes resolution.

Adjusting the Display Range



Press the DEPTH/RANGE [⇄] or [↻] key.
 [⇄] key: DEPTH/RANGE becomes smaller.
 [↻] key: DEPTH/RANGE becomes larger.



5cm



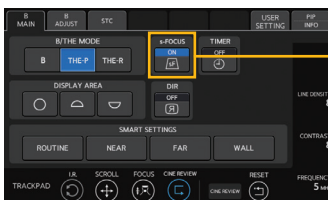
Adjustable depth/range is variable depending on the type of product connected.

Ultrasound Probe: 2, 3, 4, 6, 9 & 12cm

Ultrasound Endoscope: 2, 3, 4, 5, 6, 7, 8, 9, 10, 11 & 12cm

Turning the s-FOCUS On

s-FOCUS is a function that reduces the change in resolution with distance from the ultrasound transducer surface (focus-dependent) by combining the received signals obtained from multiple transmissions (aperture synthesis processing).



- This cannot be turned on or off while an ultrasound image is frozen.
- When s-FOCUS is turned on, the focus mark (leftward triangle “◀” mark) on the monitor display switches to the focus area mark (downward triangle “▼” mark above the ultrasound image and upward triangle “▲” mark below it).

* Cannot be performed in CHE.

Adjusting the Focus Number



Adjust the focus on the FOCUS MENU screen that appears when you press the FOCUS button on the B ADJUST tab.



Press the AUTO or MANUAL button to select whether to set the focal position in AUTO or MANUAL mode.

[AUTO] PRESENT FOCUS, FOCUS NUM, and FOCUS LOCATION are set.

[MANUAL] Press one of the F1 to F12 buttons to select the focal position. Up to two points can be selected.

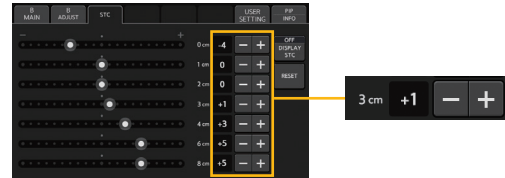


Adjusting the LE Reduction



Suppresses low-level signals in received signals and adjusts the level of processing used to reduce noise. Press the LE REDUCTION [+] or [-] key to adjust the processing level.

Adjusting the STC



Press the brightness adjustment buttons ([+] and [-] buttons) to adjust the brightness for the target distance.

* The STC can also be adjusted by tapping the brightness adjustment bar.

Using CINE REVIEW



Freeze the ultrasound image and press the CINE REVIEW key to switch to the image to be displayed.

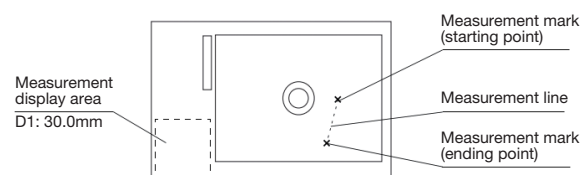
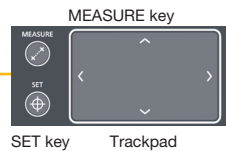


Selecting an ultrasound image with key operation / trackpad.
*In case of standard settings.

Pressing ► / Swiping to the right: Newer image is displayed. (The frame numbers on the monitor display become larger.)

Pressing ◀ / Swiping to the left: Older image is displayed. (The frame numbers on the monitor display become smaller.)

Distance Measurement



1. Press the MEASURE key to display the measurement screen on the touch panel.
2. A measurement mark (starting point) is shown in the center of the ultrasound panel.
3. Swipe the trackpad to move the measurement mark to the starting point of distance measurement.
4. Press the SET key or tap the trackpad to set the location of the starting point. A second measurement mark (ending point) is displayed near the starting point.

Enter Comments



1. When the COMMENT key is pressed, the touch panel switches to the comment input screen, and the cursor mark appears on the screen.
2. Swipe the trackpad, and move the cursor mark to the location where you want to enter the comment.
3. Use the keyboard buttons on the touch panel to enter the comment.
4. Pressing the COMMENT key decides the comment.

The registered comment buttons appear in the upper section of the comment input screen of the touch panel (registered comment display area). Pressing a registered comment button opens the registered comment on the monitor.

Disclaimer

This sheet is for quick reference only. Please refer to the relevant User's Manual(s) for instructions, warnings and cautions. Nothing in this presentation is meant to supersede or replace the instructions for use applicable to each specific device, or the processes and procedures in place at your facility. Quick Reference Guide is only for trained health care professionals.

Trademarks, product names, logos, or trade names used in this document are generally registered trademarks or trademarks of each company. Specifications, design and accessories are subject to change without any notice or obligation on the part of the manufacturer.