

How to use the single use distal cover

MAJ-2315 for EVIS EXERA III Duodenovideoscope TJF-Q190V

Symbol Descriptions
 Correct Incorrect



WARNING This quick reference guide is a summary of the steps necessary to properly use your MAJ-2315. Follow the detailed steps instructed in the latest **OPERATION/REPROCESSING MANUAL** for TJF-Q190V.

CAUTION Do not apply anti-fogging products, non-water soluble lubricant (e.g., silicone spray, silicone oil), cooking oil (e.g., olive oil), or products containing petroleum-based substances (e.g., Vaseline®) to the single use distal cover and the endoscope. These products may cause stretching and deterioration of the bending section's covering and cracks of the single use distal cover. If a single use distal cover with cracks is used, it may cause thermal injury due to electric current leaks when high-frequency cauterization treatment is performed.

* "Attaching the single use distal cover" in 3.5 Attaching accessories to the endoscope of EVIS EXERA III DUODENOVIDEOSCOPE OLYMPUS TJF-Q190V OPERATION MANUAL

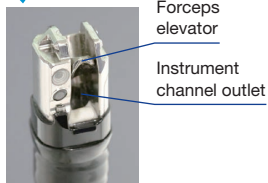
** "Inspection of the endoscopic image" in 3.8 Inspection of the endoscopic system of EVIS EXERA III DUODENOVIDEOSCOPE OLYMPUS TJF-Q190V OPERATION MANUAL

*** "Detaching the single use distal cover" in 3.5 Attaching accessories to the endoscope of EVIS EXERA III DUODENOVIDEOSCOPE OLYMPUS TJF-Q190V OPERATION MANUAL

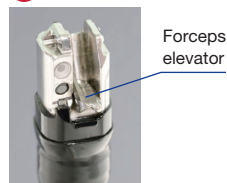
Attaching the single use distal cover

1* Confirm that the instrument channel outlet of the distal end is opened.

Opened



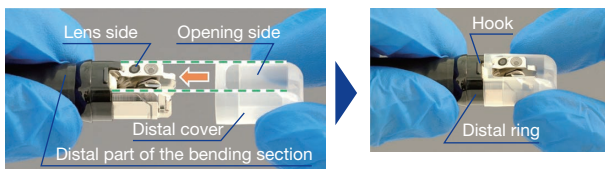
Not opened



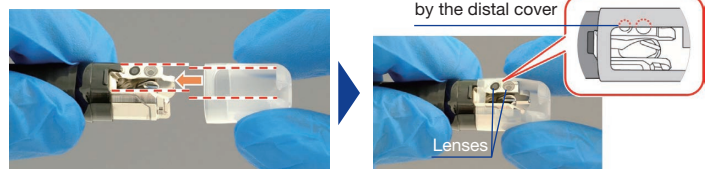
If the instrument channel outlet is not opened, move the elevator control lever in the opposite direction of the "U" direction until the forceps elevator stops to make the instrument channel outlet opened.

2* Gently hold the distal part of the bending section and the single use distal cover. Align the opening side of the single use distal cover with the lens side of the distal end of the endoscope and place the single use distal cover over the distal end until the single use distal cover touches the hook of the distal ring.

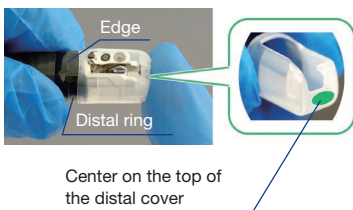
The opening side of the distal cover and the lens side of the distal end are aligned.



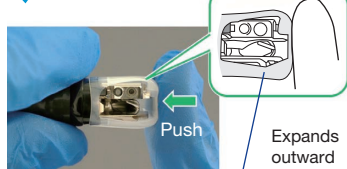
The opening side of the distal cover and the lens side of the distal end are not aligned.



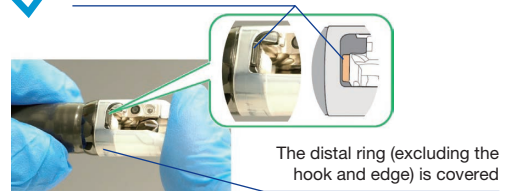
3* Confirm the single use distal cover is attached by putting your finger onto the center on the top of the single use distal cover and pushing it straight onto the distal end of the endoscope until the single use distal cover covers the distal ring (excluding the hook and edge) and the hook is completely visible within the opening of the single use distal cover.



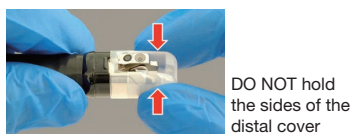
The distal cover deforms when pushed in.



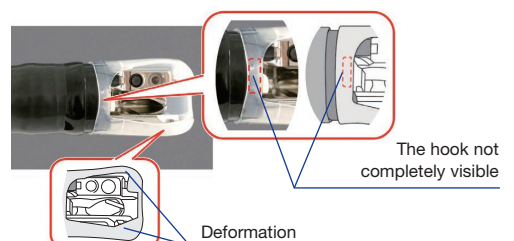
The hook completely visible



Holding the sides of the distal cover inhibits deformation of the distal cover and makes it difficult to attach.



• The hook is not completely visible from the opening side of the distal cover.
• Deformity remains on the distal cover.

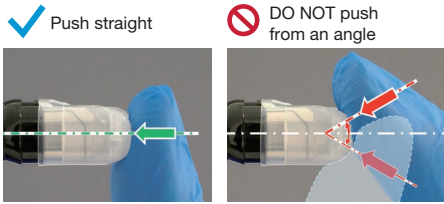


Note for Step 3 continues to the next page. ►

Attaching the single use distal cover

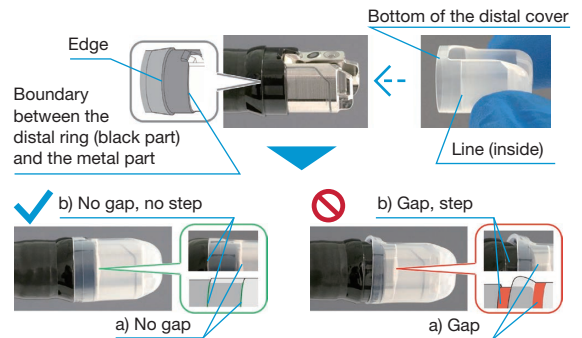
Note for Step 3

Push the single use distal cover straight onto the distal end of the endoscope. If the single use distal cover is pushed from an angle, it may not be attached securely.

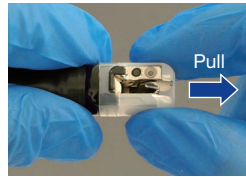


You can also confirm that the single use distal cover is securely attached to the distal end of the endoscope by the following inspection.

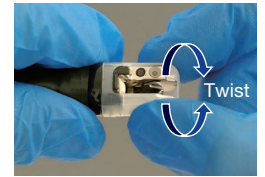
- The line (inside) of the single use distal cover reaches the boundary between the distal ring (black part) and the metal part.
- The bottom of the single use distal cover touches the edge of the distal end of the endoscope.



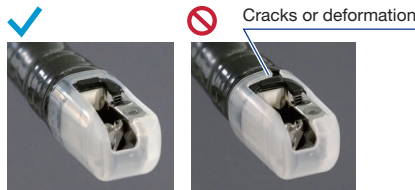
- 4*** Hold the distal part of the bending section. Pull the single use distal cover gently to confirm that the single use distal cover on the distal end of the endoscope does not slip and come off.



- 5*** Twist the single use distal cover gently in both directions and confirm that the single use distal cover on the distal end of the endoscope does not slip and come off.

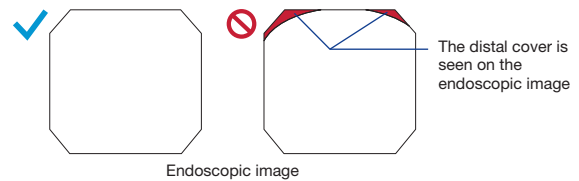


- 6*** Confirm that the single use distal cover is free of cracks or deformation.



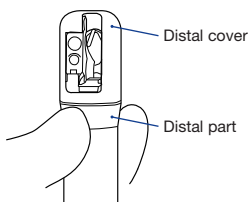
- 7*** Confirm that there is no adhesion of foreign materials between the distal end of the endoscope and the single use distal cover.

- 8**** Confirm that the single use distal cover is not seen on the endoscopic image. If the single use distal cover is partly on the endoscopic image, it is not attached properly to the distal end.



Detaching the single use distal cover

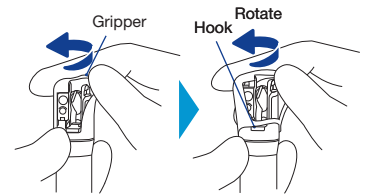
- 1***** Gently hold the distal part of the bending section.



If the instrument channel outlet is not opened, move the elevator control lever in the opposite direction of the "U" direction until the forceps elevator stops to make the instrument channel outlet opened.

- 2***** While gently holding the distal part of the bending section, remove the single use distal cover, as follows:

- Push back the top of the single use distal cover's gripper to begin removal.
- Rotate the single use distal cover until its bottom is free from the distal ring's hook.



- 3***** Dispose of the single use distal cover, as described in the "REPROCESSING MANUAL" with your endoscope model listed on the cover.



Disclaimer

This sheet is for quick reference only. Please refer to the relevant User's Manual(s) for instructions, warnings and cautions. Nothing in this document is meant to supersede or replace the instructions for use applicable to each specific device, or the processes and procedures in place at your facility.

Trademarks, product names, logos, or trade names used in this document are generally registered trademarks or trademarks of each company. Specifications, design and accessories are subject to change without any notice or obligation on the part of the manufacturer.

