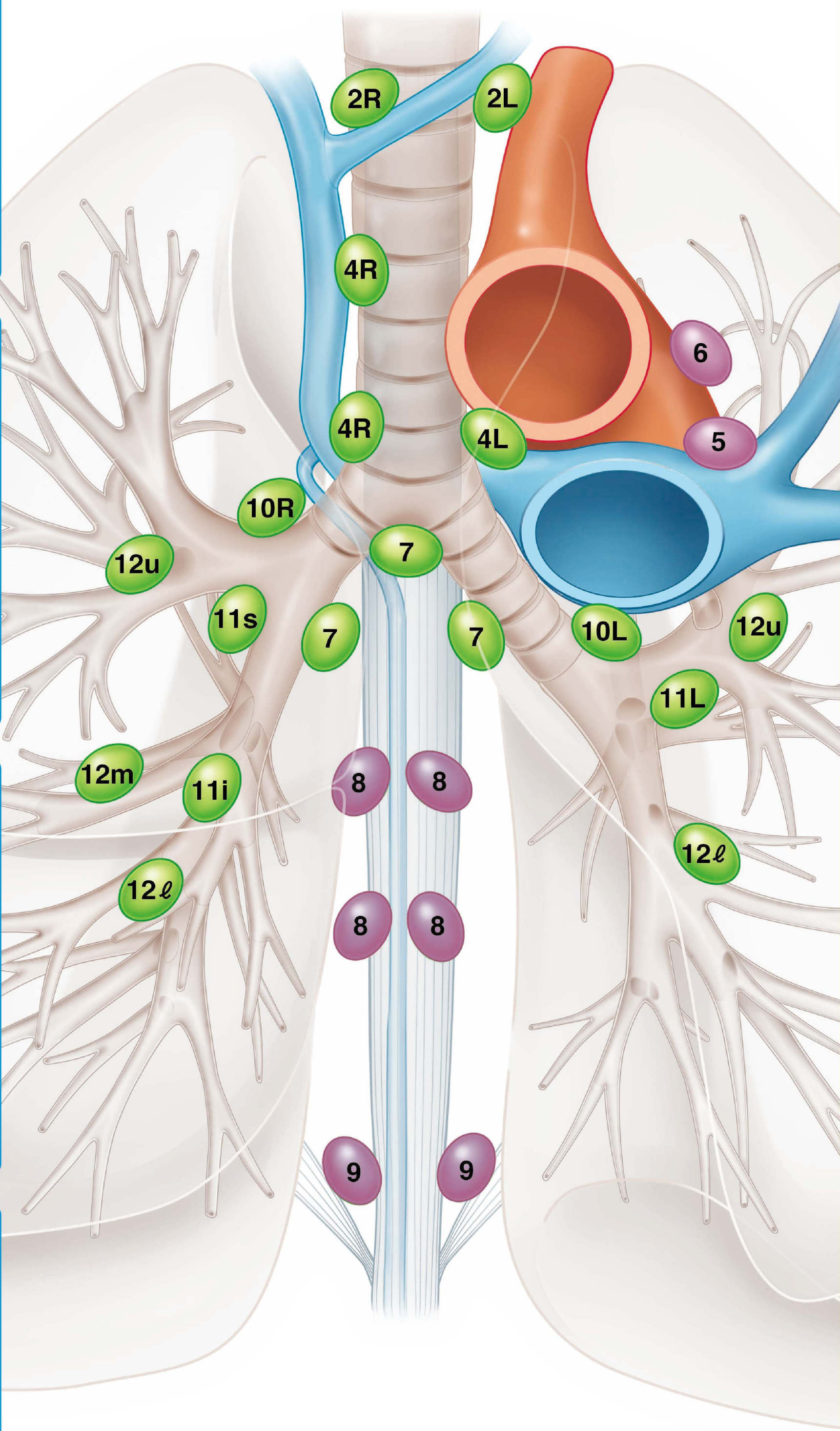
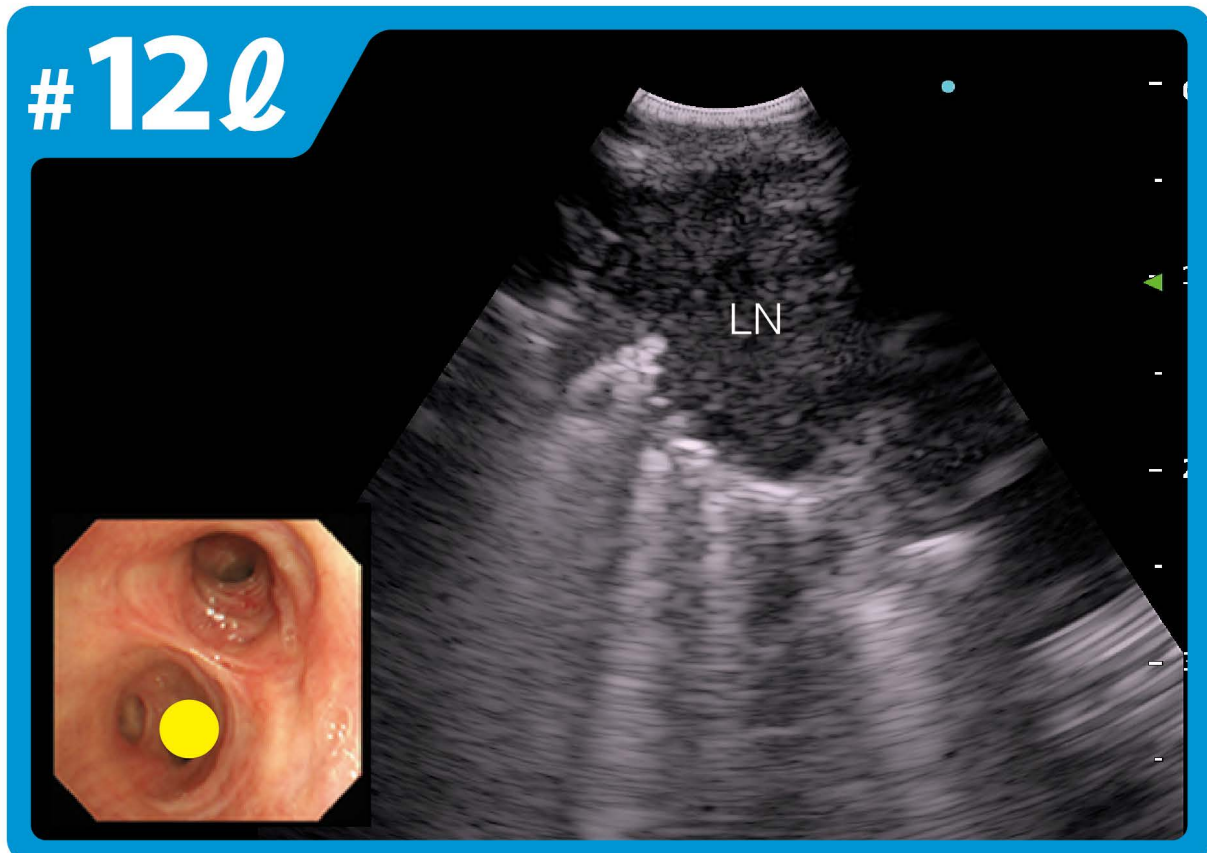
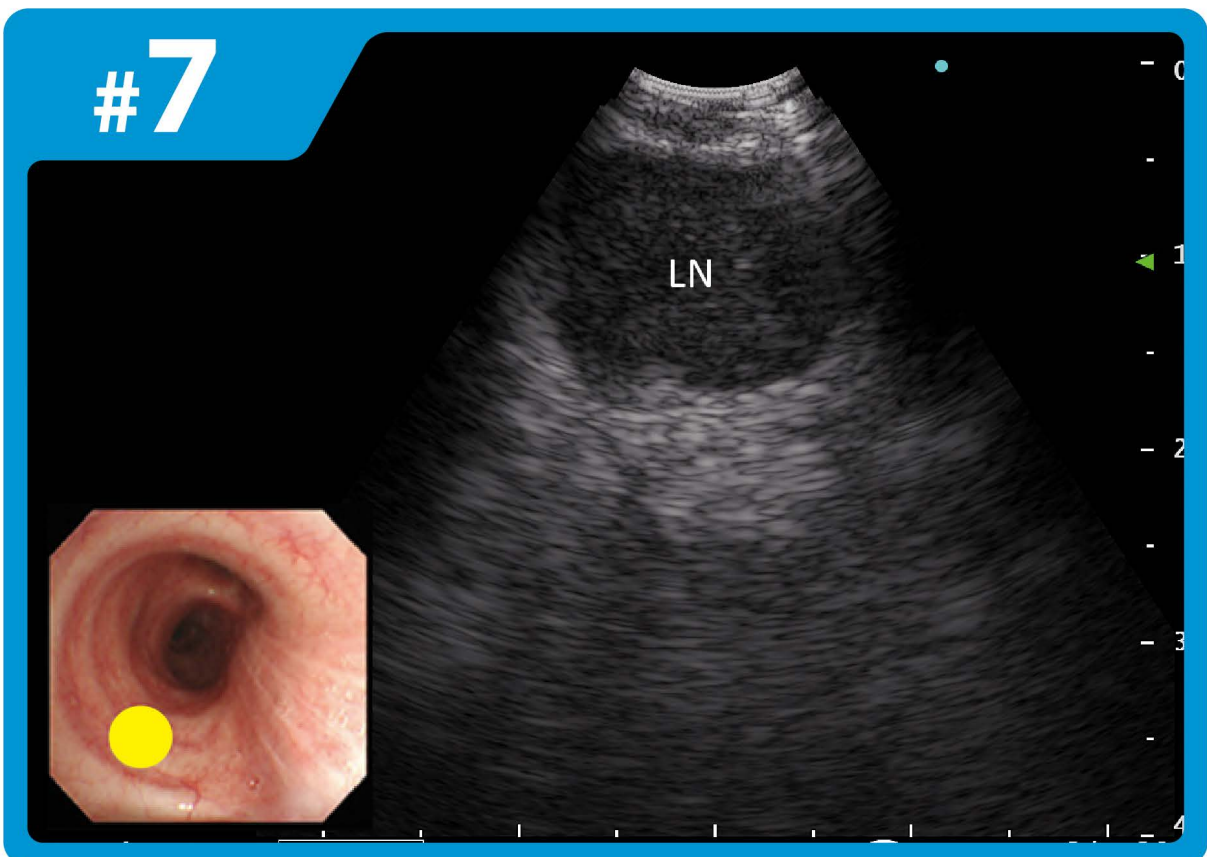
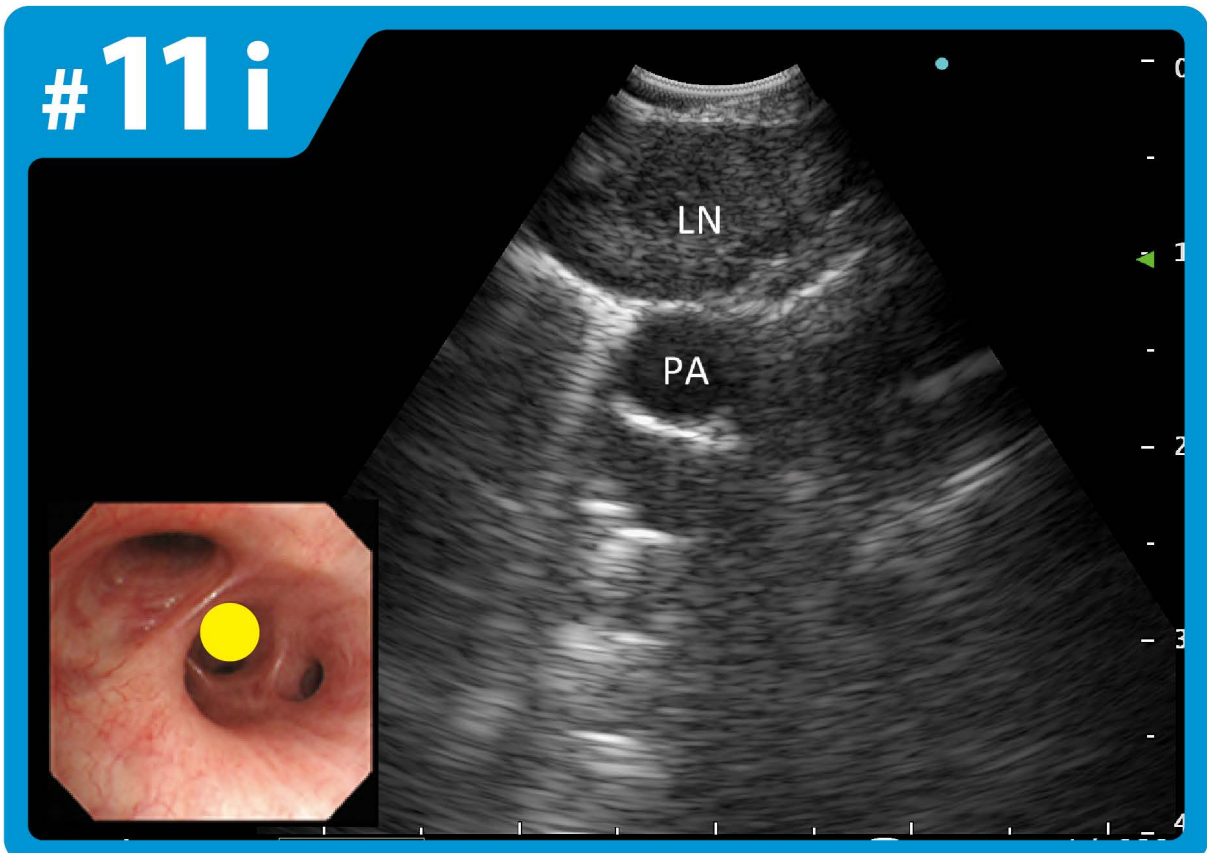
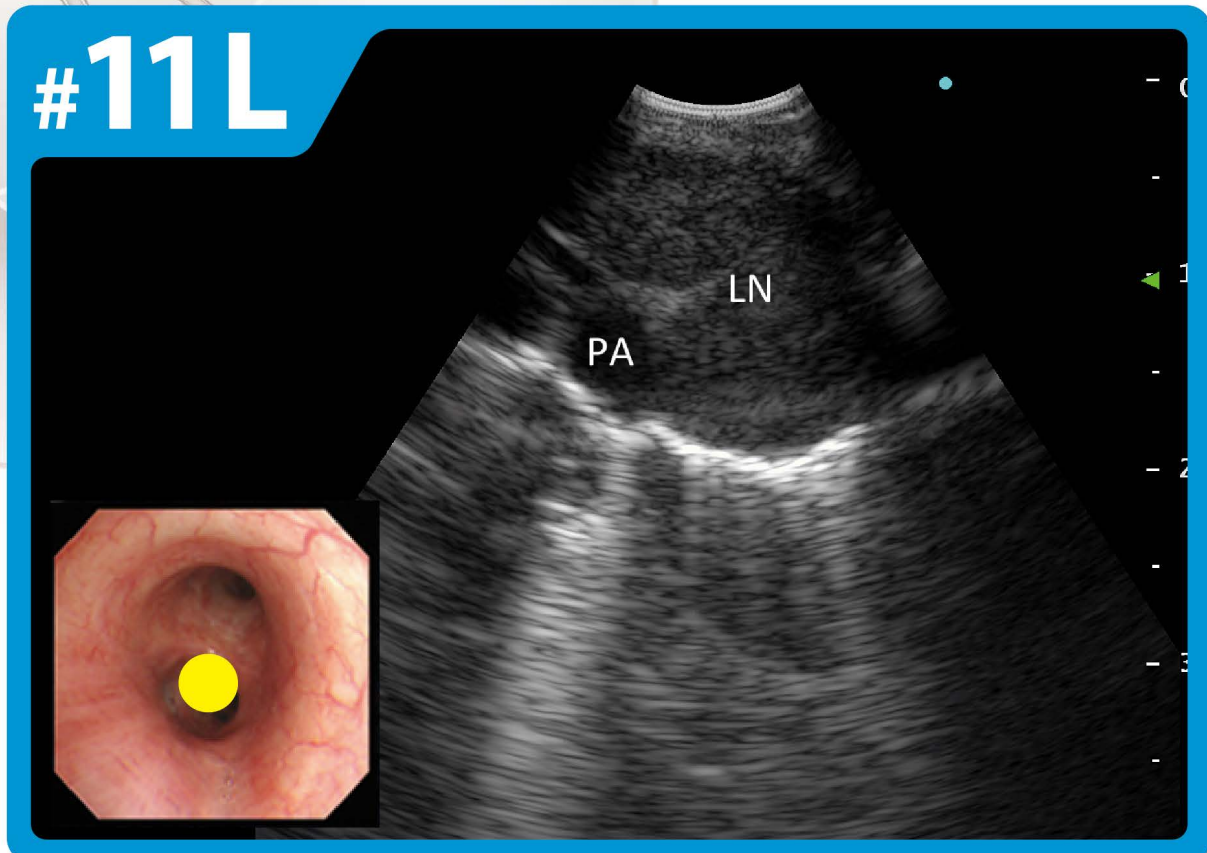
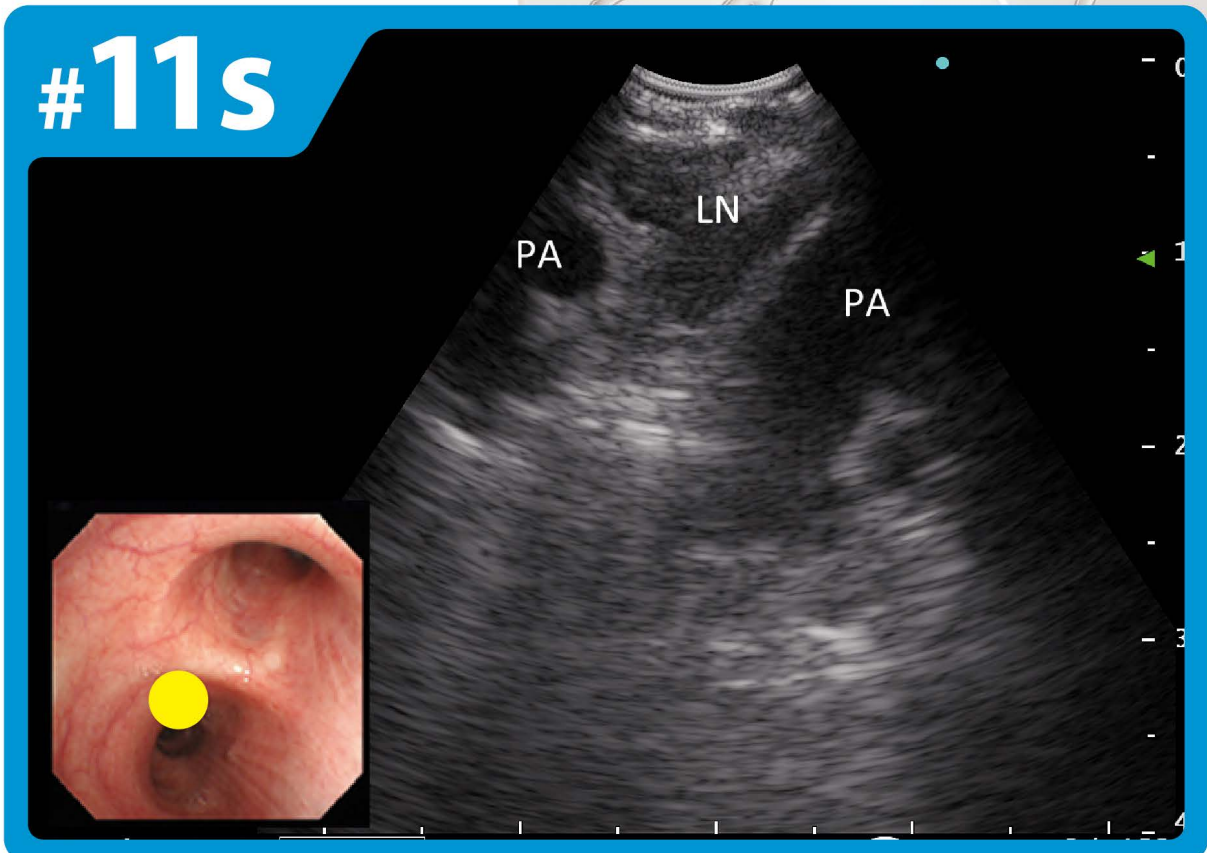
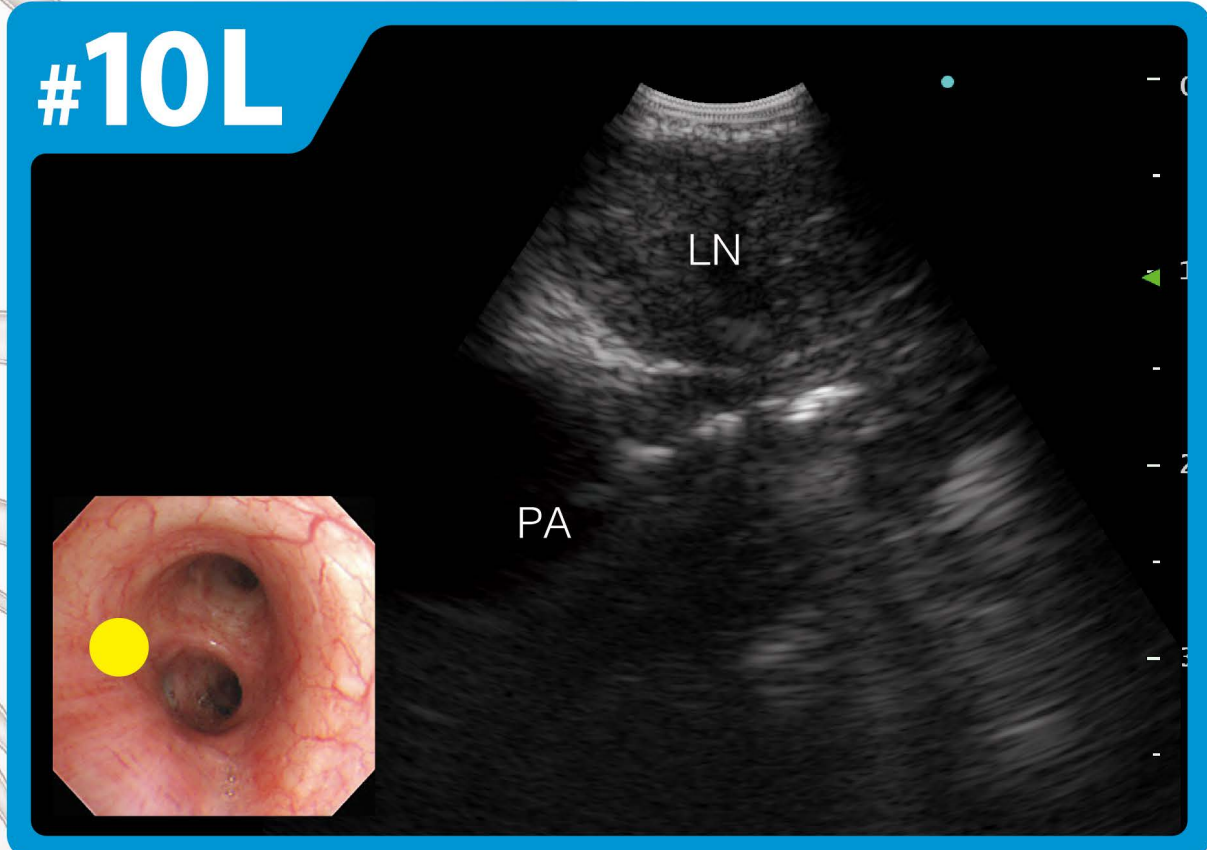
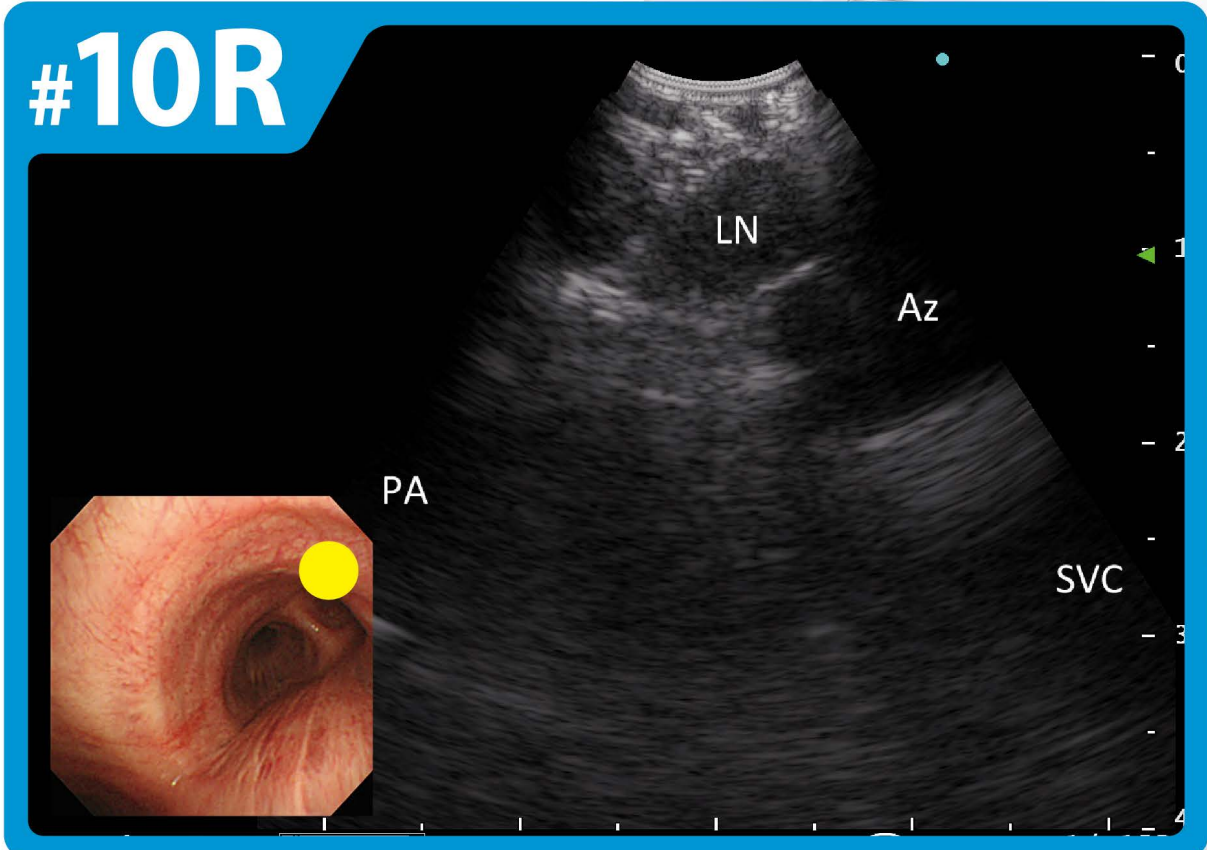
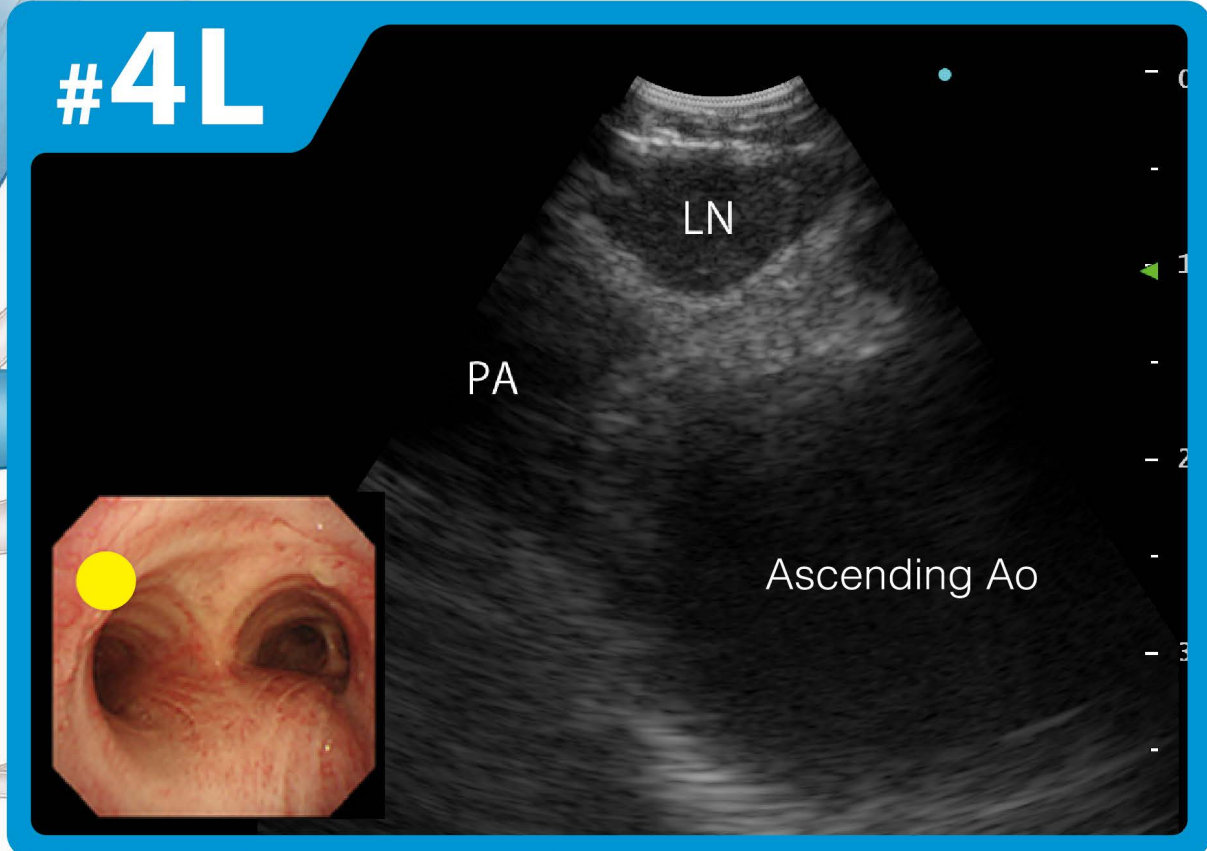
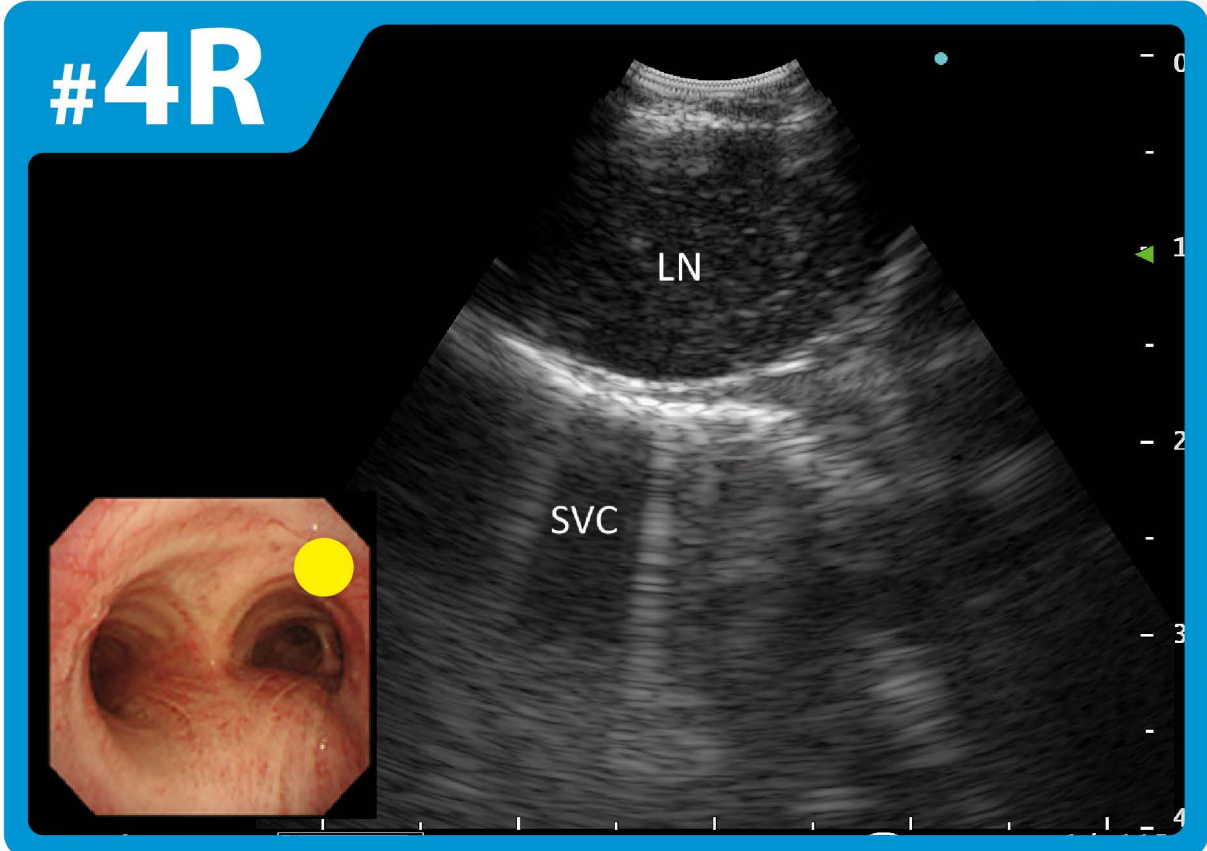
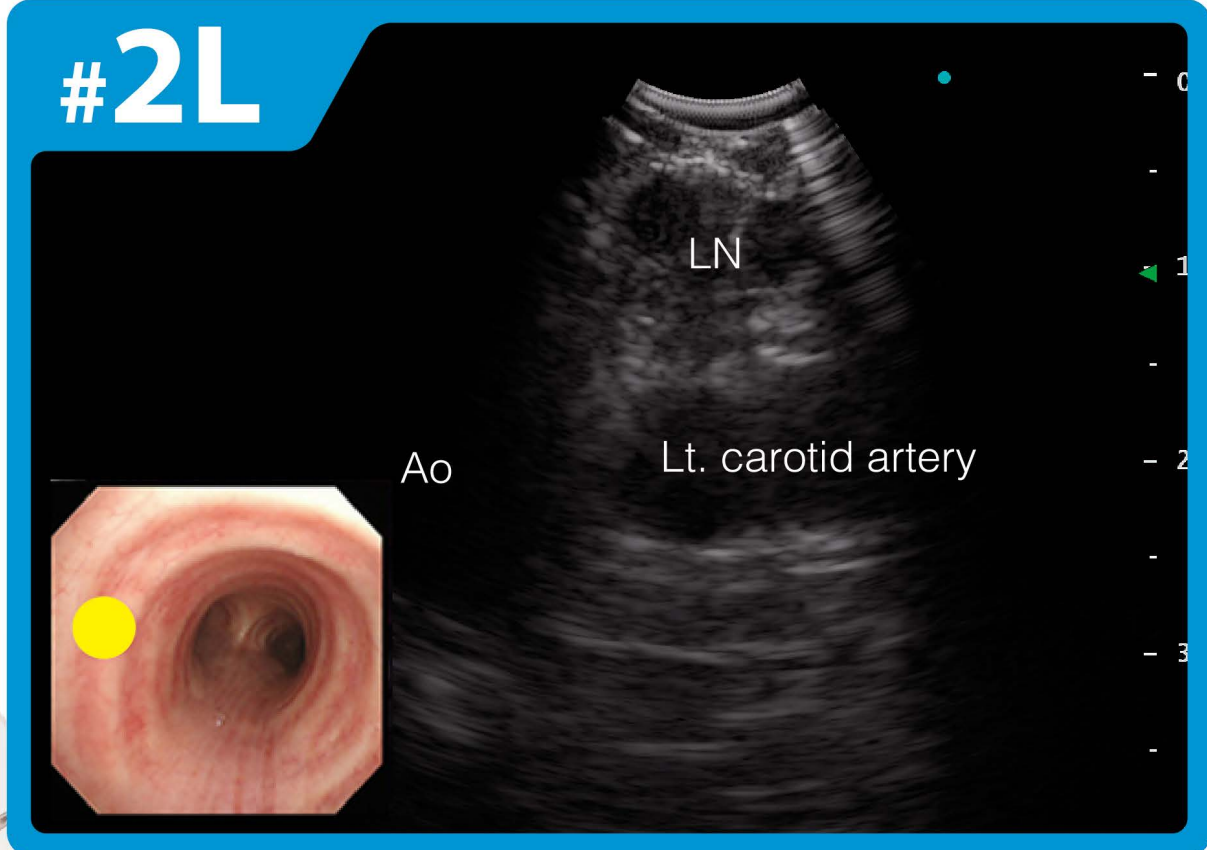
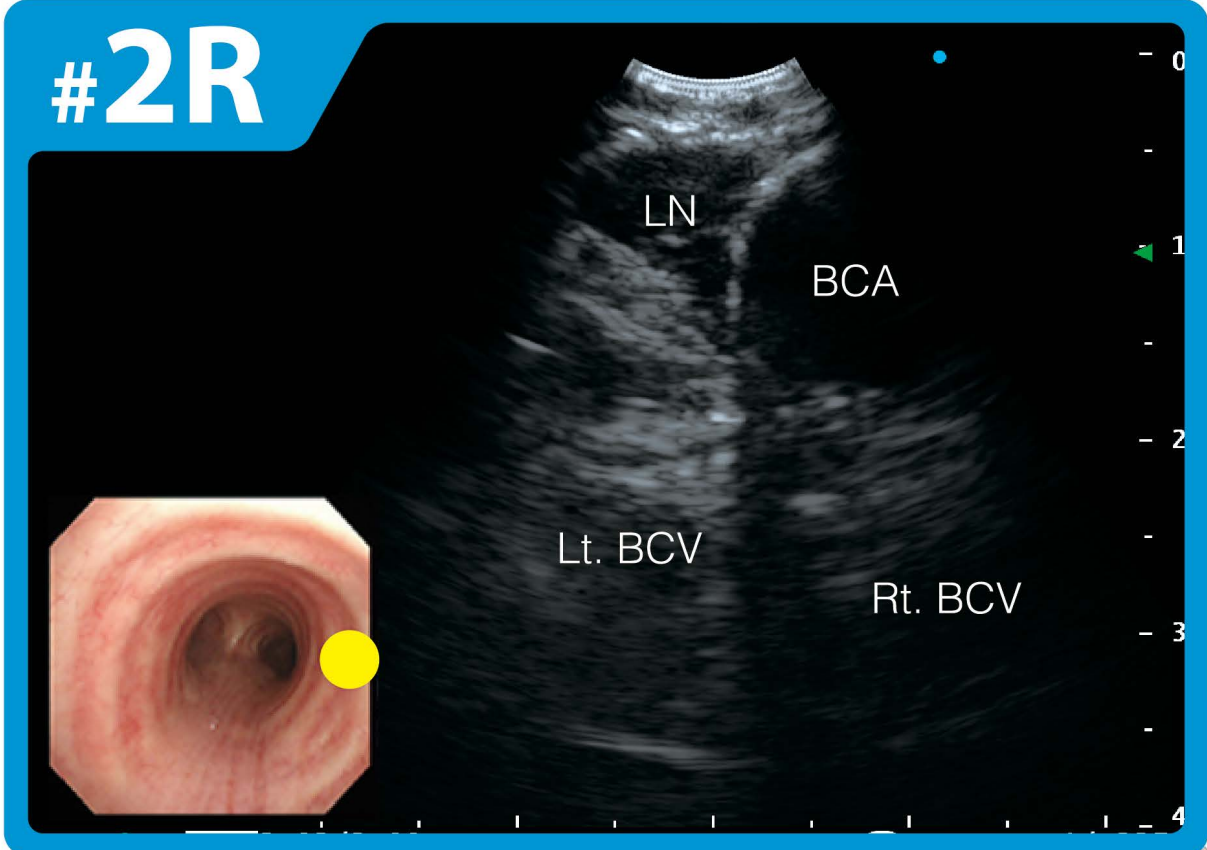


# Regional Lymph Node Mapping with EBUS-TBNA



The Olympus EBUS Solution  
Proven Precision in Real Time

Courtesy of:  
**Takahiro Nakajima, MD, PhD**  
Department of General Thoracic Surgery, Graduate School of Medicine, Chiba University  
**Kazuhiro Yasufuku, MD, PhD**  
Division of Thoracic Surgery, Toronto General Hospital, University Health Network  
**Ichiro Yoshino, MD, PhD**  
Department of General Thoracic Surgery, Graduate School of Medicine, Chiba University

