

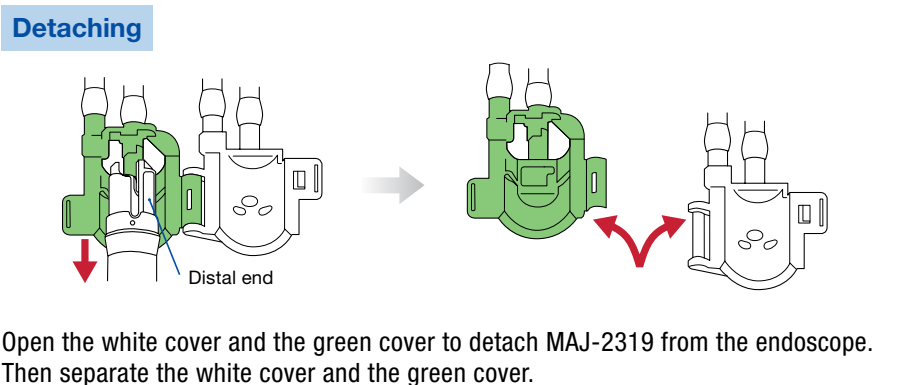
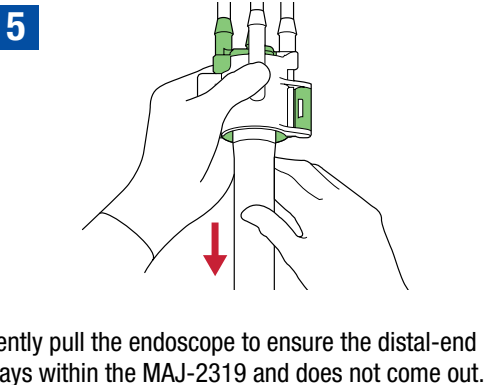
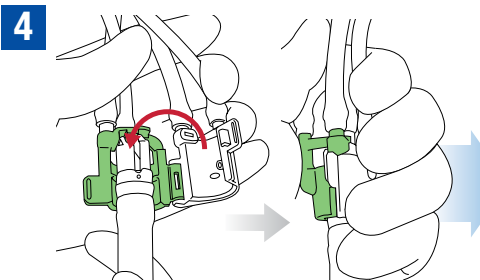
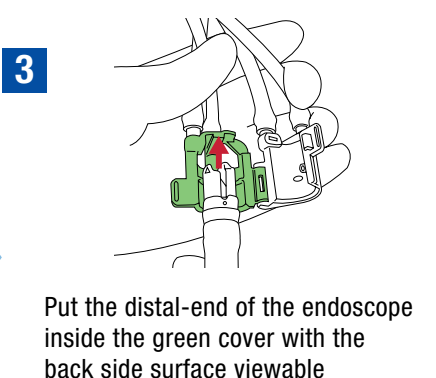
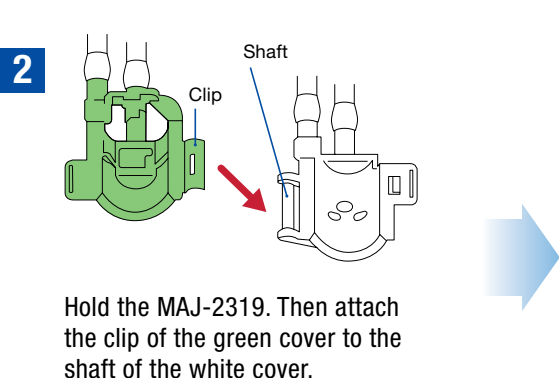
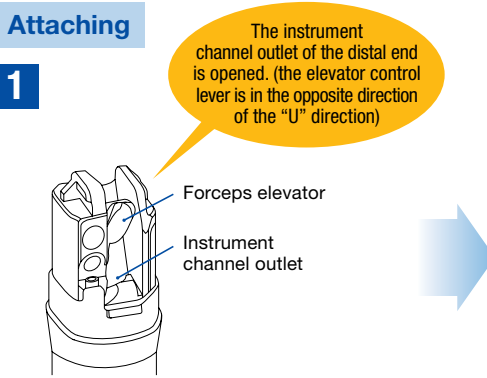
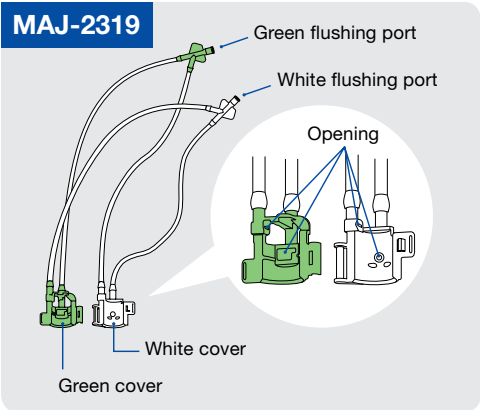
HOW TO USE THE DISTAL-END FLUSHING ADAPTER

MAJ-2319 for EVIS EXERA III Duodenovideoscope TJF-Q190V

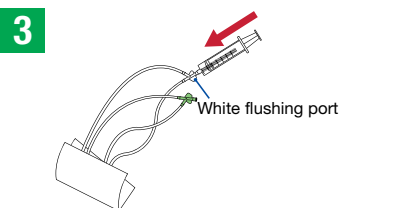
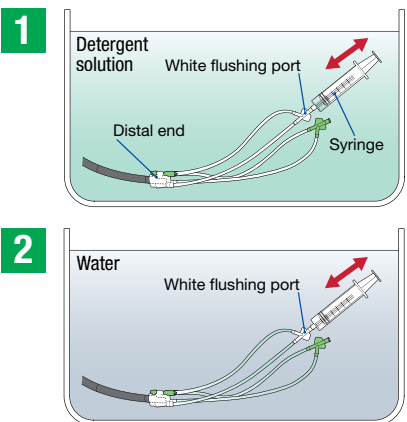


WARNING: This quick reference guide is a summary of the steps necessary to properly use your MAJ-2319. Follow the detailed steps instructed in the latest **REPROCESSING MANUAL for TJF-Q190V**

Attaching and Detaching MAJ-2319 to the Distal-end of the Endoscope*

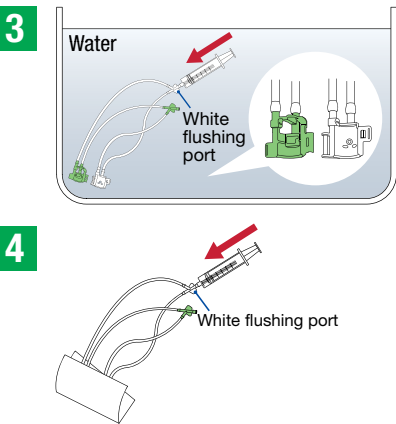
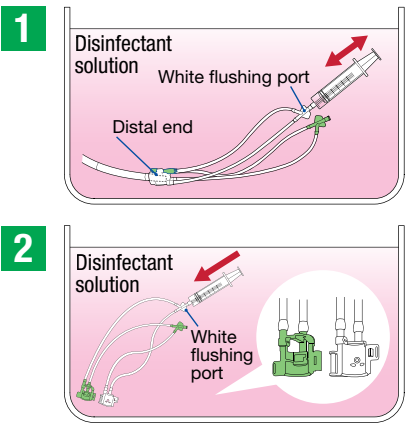


Manual Cleaning Process with MAJ-2319



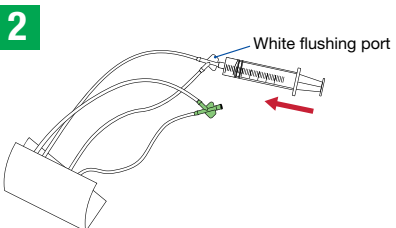
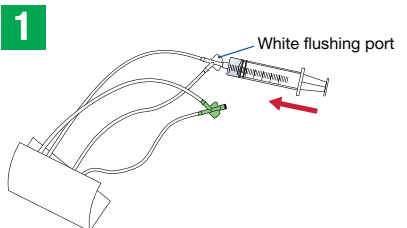
		Flush Content	Total Flush Volume (from each port)	Procedure (Repeat the same procedure through the green flushing port)	
1	Flush the distal end with detergent solution	Detergent solution	180 ml	While immersing a 30 ml syringe completely in the appropriate liquid, slowly fill it with the appropriate liquid, attach it to the white flushing port, and forcefully flush the distal-end with 30 ml of the liquid. Then with immersing the syringe attached to the port in the appropriate liquid completely, repeat pumping several times (until the volume reaches the specified number)	
2	Remove detergent solution from the distal end	Water	90 ml		
3	Remove detergent solution from the distal-end flushing adapter	Air	30 ml		
				Cover the white and the green covers of MAJ-2319 in clean lint-free cloths to prevent splashing from the openings of the covers. Fill the syringe with air, attach it to the white flushing port, and flush the adapter with 30 ml of air.	

Manual disinfecting process with MAJ-2319



		Flush Content	Total Flush Volume (from each port)	Procedure (Repeat the same procedure through the green flushing port)	
1	Flush the distal end with disinfectant solution	Disinfectant solution	180 ml	While immersing a 30 ml syringe completely in the appropriate liquid, slowly fill it with the appropriate liquid, attach it to the white flushing port, and forcefully flush the distal-end with 30 ml of the liquid. Then while immersing the syringe attached to the port in the appropriate liquid completely, repeat pumping several times (until the volume reaches the specified number)	
2	Remove disinfectant solution from the distal-end flushing adapter	Air	30 ml		
3	Flush the distal-end flushing adapter with water	Water	30 ml		
4	Remove rinse water from the distal-end flushing adapter	Air	30 ml	Cover the white and the green covers of MAJ-2319 in clean lint-free cloths to prevent splashing from the openings of the covers. Fill the syringe with air, attach it to the white flushing port, and flush the adapter with 30 ml of air.	

Alcohol flushing process with MAJ-2319



		Flush Content	Total Flush Volume (from each port)	Procedure (Repeat the same procedure through the green flushing port)	
1	Flush the distal-end flushing adapter with alcohol	Alcohol	30 ml	Cover the white cover and the green cover of MAJ-2319 in sterile lint-free cloths to prevent splashing from the openings of the covers. Fill the syringe with the alcohol, attach it to the white flushing port, and forcefully flush the adapter with 30 ml of the alcohol.	
2	Remove alcohol from the distal-end flushing adapter	Air	30 ml		
				Fill the syringe with air, attach it to the white flushing port, and flush the adapter with 30 ml of air. Confirm that no alcohol exits from both the openings of the white cover and the green cover of the adapter during the flush.	

* All process to be managed with all instruments immersed in the appropriate liquid